

ANNUAL REPORT



## From the President and Board Chair

Greetings,

We are pleased to present PATH's 2009 annual report. We hope you will enjoy this year's shorter and more innovative approach to highlighting our recent milestones.

The world is entering a pivotal time in global health. Never before have we seen such tremendous political and financial support. And never before have we faced—indeed, set—such high expectations. In 2015, when progress toward the Millennium Development Goals is assessed, we will clearly see whether the global community had the will and capacity to solve the greatest health challenges.

As we enter a new decade—and, in Seattle, a new home for our headquarters—PATH's capacity and resolve to meet these challenges is greater than ever. Our achievements are saving lives today and signaling even greater promise for the future.

The strength of our partnerships has been the cornerstone of our progress and impact. Your collaboration and support are central to our work, and we are grateful for your continued commitment to global health. Thank you.

Sincerely,



Christopher J. Elias, MD, MPH  
President and CEO



Molly Joel Coye, MD, MPH  
Chair, Board of Directors



# 2009: THE YEAR IN REVIEW

As the first decade of the 21st century comes to a close, PATH and our partners are gaining momentum. We are making demonstrable progress in our effort to improve health for the world's most vulnerable populations.

The world is witnessing the impact that innovative solutions can achieve on seemingly insurmountable global health problems. Substantial political and financial commitments from governments, foundations, individuals, and the private sector are leading to tangible progress. Countries are gaining ground in the struggle against malaria. Health programs are preventing cervical cancer. Child mortality rates are dropping. Investments in global health are paying off in terms of real lives saved.

Alongside these gains, however, are stark reminders of the complexity of our challenge. Countries with strong national leadership are making progress against the leading killers, but poorer and less-developed countries and communities are experiencing more concentrated burdens of disease and increasing health inequity.

With the most robust pipeline of innovative tools and technologies in our history, PATH and our partners are poised to overcome these inequities. We are an integral part of the global health solutions that are unfolding today. And we are challenging ourselves to come even closer to our vision: a world where innovation ensures that health is within reach for everyone.

## **New tools move into use**

PATH, our partners, and the countries and communities we work with have a tremendous capacity to develop solutions. But it can take years to bring new technologies or program approaches from concept into widespread use. In 2009, we moved many technologies and tools along the "innovation pipeline." To accelerate their development, we applied strategies—public-private partnerships, user-centered research, refined market and commercial assessments—that moved these solutions ahead as efficiently as possible.

Our Malaria Vaccine Initiative (see inner fold) serves as one example of this approach. To accelerate development of the world's most

promising malaria vaccine, the partnership launched a multicountry trial, pioneered the use of regulatory pathways, and worked with decision-makers to ensure that the vaccine will quickly move into widespread use if proven safe and effective. If regulatory clearance is granted, full availability is possible in five years or so, potentially saving hundreds of thousands of lives.

## **Solutions go where they're needed**

PATH works to bring existing health solutions to people who need them. Through partnerships with national governments, local community organizations, and the private sector, we identify needs and determine how to extend the reach of health solutions. We then strive to ensure that health systems can deliver the solutions and that policies reinforce their use.

The Prevention of Postpartum Hemorrhage Initiative (POPPHI), described on the inner fold, illustrates how we bring health solutions to hard-to-reach populations. In Mali, the initiative conducted research that led to policy change and dramatically increased access to a proven, lifesaving intervention for excessive bleeding after childbirth. In Mali today, this policy change means mothers are more likely to survive to care for their babies.

## **Taking solutions to scale**

Only in the past few years has the world begun to see new global health interventions make a difference at national or global levels. The "implementation science" for scaling up public health efforts in the poorest countries is still nascent.

One of PATH's most tangible contributions to these challenges is our ability to bridge gaps in implementation. Across each of our focus areas, we work to find new ways to deliver comprehensive health solutions. Just as important, we bring them into national or regional use, often in collaboration with governments and the private sector.



In 2009, for example, we helped integrate solutions to the deeply intertwined epidemics of HIV and tuberculosis. As this report shows, we built critical, sustainable connections across previously disparate treatment systems in Tanzania. The outcome of this work is a more effective approach to preventing the dual epidemics of HIV and tuberculosis and bringing more comprehensive services to people—49,000 so far—across the country.

## • THANK YOU FOR SHARING OUR VISION

Our donors are essential supporters of our vision of a world where health is within reach for all. In 2009, individual donors and family foundations contributed more than \$1.4 million of flexible “innovation funding,” including gifts to PATH’s Catalyst Fund and Fund for Health Technologies. Such funding allowed us to:

- Carry out 37 activities that helped us launch and pursue new initiatives. From establishing oral rehydration therapy corners in Kenya to testing mobile handheld devices as a tracking tool for tuberculosis, this support pushed our work forward in every area of need.
- Leverage six major grants for projects focused on areas such as vaccines and childhood immunization, diagnostic technologies, and better feeding practices for infants and young children.



## Building on progress

PATH is ready to build on these and other achievements in 2010 and beyond. The next five years will be critical to reaching the global health community’s ambitious goals. Working with our partners and supporters, we can move closer to achieving these milestones and improving the lives of people around the world.

- Meet strategic priorities, including new systems for understanding (and increasing) the impact of our work; critical support to our programs in Nicaragua and China and for HIV, maternal and child health, and malaria; and high-visibility international collaborations that increase our scope and range.

In 2009, Charity Navigator awarded PATH four stars for financial stewardship for the fifth year running, an honor accorded to fewer than 4 percent of rated charities. Last year 89 cents of every dollar we spent was put to work in direct support of PATH’s programs.



At the start of a new decade, we can imagine for the first time a world without malaria, where children no longer die for lack of basic health care, where women are empowered to protect their own health and the health of their families. Thank you for your contribution. And thank you for sharing our vision.

*In 2009, more than 300 people joined us from our online communities to support the reestablishment of oral rehydration corners in clinics throughout Kenya, giving children effective treatment for one of the country’s most dangerous childhood killers: severe diarrheal disease.*

## 2009 FINANCIAL SUMMARY

### 2009 financial summary (audited)

#### REVENUE (in thousands)

Foundations and corporations	\$160,213
US Government	56,800
Other governments, nongovernmental organizations (NGOs), multilaterals	20,271
Individuals/other	14,713
Investments	4,595
<b>Total revenue</b>	<b>\$256,592</b>

#### EXPENSES (in thousands)

##### Program services

##### PROGRAMS:

Emerging and epidemic diseases	\$25,116
Health technologies	13,297
Maternal and child health and nutrition	10,195
Reproductive health	19,696
Vaccines and immunization	32,234
Subtotal programs	100,538
Program subawards	\$125,472

**Subtotal program services \$226,010**

##### Support services

Management and general	24,078
Bid and proposal	2,109
Fundraising	1,258

**Subtotal support services 27,445**

**Total expenses \$253,455**

### Assets and liabilities

#### ASSETS (in thousands)

Grants receivable	\$459,288
Invested grant funds	292,808
Cash and cash equivalents	72,521
Other	25,217

**Total assets \$849,834**

#### NET ASSETS AND LIABILITIES (in thousands)

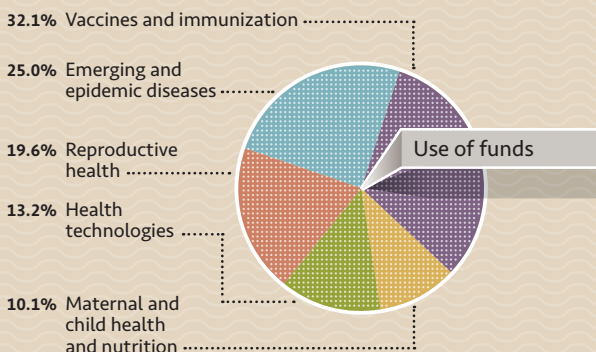
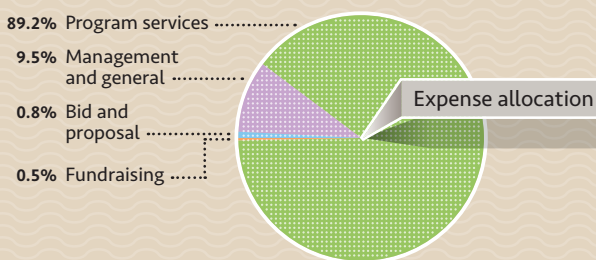
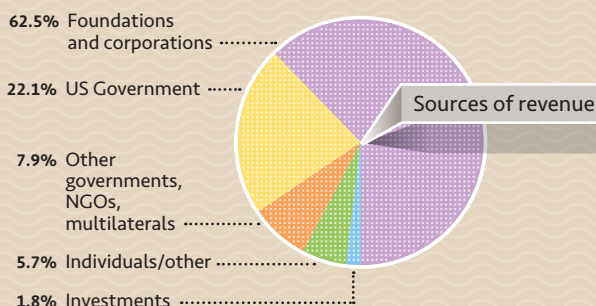
##### Net assets

Grant funds temporarily restricted	\$787,828
Unrestricted assets	17,476
Permanently restricted assets	3,365

**Total net assets 808,669**

**Current liabilities 41,165**

**Total net assets and liabilities \$849,834**



Figures are presented in US dollars.

**Notes:** The above financial summary is an excerpt from PATH's audited financial statements, which are audited by the firm Clark Nuber P.S. Full copies are available on our website at [www.path.org](http://www.path.org).

PATH is an international, nonprofit, nongovernmental organization. Our mission is to improve the health of people around the world by advancing technologies, strengthening systems, and encouraging healthy behaviors. Contributions to PATH are tax-exempt under US IRS code 501(c)(3).



OUR WORK

PATH focuses on moving global health solutions—technologies, tools, and interventions—along the pathway from innovation to impact. With more than 80 projects and hundreds of partners, we use creativity and collaboration to improve global health every day.

The summary below provides an overview of PATH's 25 largest projects, and the map to the right highlights many of our most significant accomplishments of the year.

The "innovation funding" icon identifies PATH projects that received flexible support, such as support from individual donors, at a critical phase of their development.

EMERGING AND EPIDEMIC DISEASES

PATH lessens the burden of epidemic diseases—including malaria, tuberculosis, and HIV/AIDS—as well as emerging threats such as pandemic influenza.

AIDS, Population, and Health Integrated Assistance II

This community-based project promotes healthy behaviors and increases the use of health services in Kenya's Western Province.

Khusela

PATH and our partners are improving the quality, availability, and use of services that prevent mother-to-child transmission of HIV in South Africa.

Malaria Control and Evaluation Partnership in Africa (MACEPA)

MACEPA supports sub-Saharan African countries in rapidly scaling up and sustaining the impact of malaria prevention and control efforts.

Technical Assistance Support Contract, Tuberculosis (TB) Sector

PATH provides short- and long-term technical assistance to countries with high TB burdens.

HEALTH TECHNOLOGIES

PATH brings appropriately designed, affordable, and innovative technologies to low-resource settings. Our interventions help to improve immunization, nutrition, diagnosis, child survival, and maternal and reproductive health.

Health Innovation Portfolio

Our "innovation engine" explores and tests new ideas for technology solutions to global health problems.

Jet Injectors for Delivery of Vaccines

This project focuses on sterile, single-dose, needle-free syringes for administering vaccines.

Safe Water Project

This project seeks to bring household water treatment and storage products to the world's poorest consumers.

Technologies for Health (HealthTech IV)

HealthTech has focused on adapting, designing, developing, and advancing technology solutions since 1987.

Thermostable Vaccines

This project explores approaches that protect vaccines from heat and freeze damage.

MATERNAL AND CHILD HEALTH

PATH improves the health of women and children by applying promising approaches to address the leading causes of maternal and child death. Our projects focus on safe birth and newborn care, nutrition, and the control of diarrheal disease.

Infant & Young Child Nutrition (IYCN) Project

IYCN works to improve nutrition during the critical time from pregnancy through the first two years of life.

Prevention of Postpartum Hemorrhage Initiative (POPHI)

POPHI focused on prevention and early treatment of postpartum hemorrhage worldwide.

Sure Start

PATH and our many partners are reducing infant and maternal illness and death in India.

Ultra Rice®

When blended with traditional rice, nutrient-rich Ultra Rice® meets the needs of low-resource, rice-consuming populations.

REPRODUCTIVE HEALTH

PATH works to prevent cervical cancer; advocate for services and supplies; address family-planning needs; prevent sexually transmitted infections, including HIV; expand options for abortion-related care; and encourage healthier behaviors.

Human Papillomavirus Vaccines: Evidence for Impact

In India, Peru, Uganda, and Vietnam, PATH is exploring the most effective vaccination strategies for human papillomavirus (HPV).

START-UP

PATH is advancing low-cost molecular tests for the types of HPV that cause cervical cancer.

VACCINES AND IMMUNIZATION

PATH closes gaps in access to lifesaving vaccines. Our projects accelerate vaccine research and development, expand access to new vaccines, and strengthen health systems.

Advancing Pandemic Influenza Vaccines

This project seeks to develop new influenza vaccines for use in low-resource countries.

Advancing Rotavirus Vaccine Development

PATH and emerging-country vaccine manufacturers are developing safe, effective, and affordable rotavirus vaccines.

Children's Vaccine Program

Our longest-running immunization program works to ensure that children receive the full benefits of new and underused vaccines.

Enteric Vaccine Initiative

PATH and our partners are advancing vaccines against the leading bacterial causes of diarrheal disease: enterotoxigenic *Escherichia coli* and *Shigella*.

Japanese Encephalitis (JE) Project

This project helped countries control JE by determining disease burden, accelerating availability of an affordable vaccine, and assisting with vaccine introduction.

Malaria Vaccine Initiative (MVI)

MVI works to accelerate development of malaria vaccines and to ensure their availability and accessibility in the developing world.

Meningitis Vaccine Project (MVP)

This partnership between PATH and the World Health Organization (WHO) works to eliminate epidemic meningitis in sub-Saharan Africa by focusing on the development, testing, and introduction of conjugate meningococcal vaccines.

Optimize

This PATH-WHO partnership works to transform the way vaccines and other health products reach underserved populations.

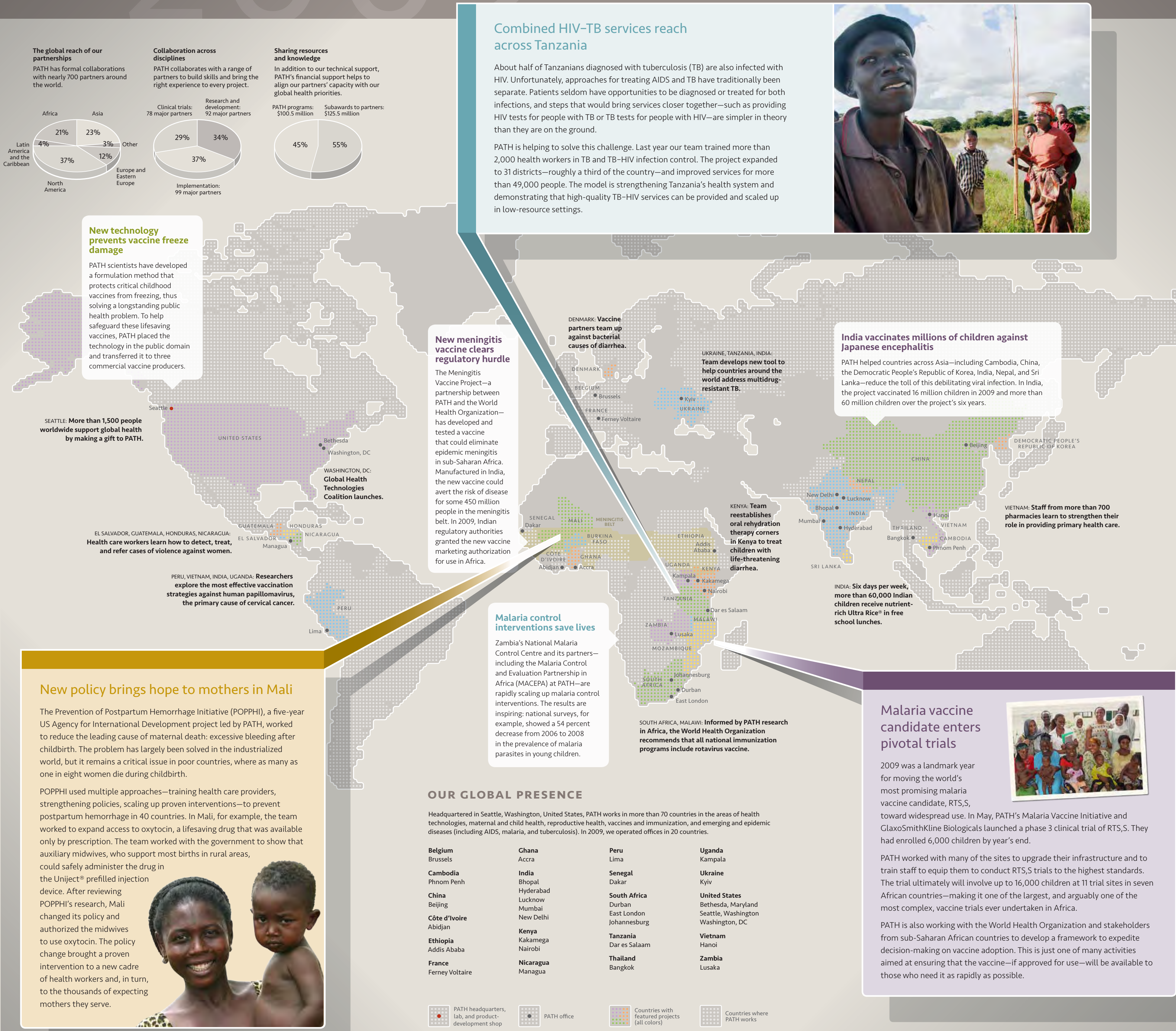
Pneumococcal Vaccine Project

PATH is advancing research and development of new pneumococcal vaccines for infants and children in the developing world.

Rotavirus Vaccine Program

PATH, WHO, and the US Centers for Disease Control and Prevention helped establish an evidence base for accelerated rotavirus vaccine introduction in the developing world.

WE ENVISION A WORLD WHERE INNOVATION ENSURES THAT HEALTH IS WITHIN REACH FOR EVERYONE



Malaria vaccine candidate enters pivotal trials

2009 was a landmark year for moving the world's most promising malaria vaccine candidate, RTS,S, toward widespread use. In May, PATH's Malaria Vaccine Initiative and GlaxoSmithKline Biologicals launched a phase 3 clinical trial of RTS,S. They had enrolled 6,000 children by year's end.

PATH worked with many of the sites to upgrade their infrastructure and to train staff to equip them to conduct RTS,S trials to the highest standards. The trial ultimately will involve up to 16,000 children at 11 trial sites in seven African countries—making it one of the largest, and arguably one of the most complex, vaccine trials ever undertaken in Africa.

PATH is also working with the World Health Organization and stakeholders from sub-Saharan African countries to develop a framework to expedite decision-making on vaccine adoption. This is just one of many activities aimed at ensuring that the vaccine—if approved for use—will be available to those who need it as rapidly as possible.

Uniject is a registered trademark of BD.  
Ultra Rice is a registered trademark in the United States of Bon Dente International, Inc.  
Photos, clockwise from top: David Jacobs; PATH/David Poland; PATH/Monique Berlier.



## EXECUTIVE AND PROGRAM LEADERSHIP

### Board of Directors

PATH's board members are public health and business leaders from the countries we serve, Europe, and the United States. The board provides governance and fiduciary oversight, sets policy, and assesses PATH's overall performance.



#### Dean Allen **TREASURER**

United States  
CEO, McKinstry  
Seattle, WA USA

#### Supamit Chunsuttiwat, MD, MPH

Thailand  
Senior Expert in Disease Control  
Ministry of Public Health  
Bangkok, Thailand

#### Awa Marie Coll-Seck, MD, PhD

Senegal  
Executive Secretary, Roll Back  
Malaria Partnership Secretariat  
Geneva, Switzerland

#### Vera Cordeiro, MD **VICE CHAIR**

Brazil  
Founder and CEO, Associação  
Saúde Criança  
Rio de Janeiro, Brazil

#### Molly Joel Coye, MD, MPH **CHAIR**

United States  
Senior Advisor, Public Health Institute  
Oakland, CA USA

#### Steve Davis, MA, JD

United States  
Senior Advisor, Social Sector Office,  
McKinsey & Company  
Seattle, WA USA

#### Alex Chika Ezech, PhD, MSc

Nigeria  
Executive Director, African  
Population & Health Research Center  
Nairobi, Kenya

#### George Gotsadze, MD, PhD

Republic of Georgia  
Director, Curatio International  
Foundation  
Tbilisi, Georgia

#### Eivor Halkjaer

Sweden  
Former Swedish Ambassador  
and Former Senior Advisor to  
the Director General, Swedish  
International Development  
Cooperation Agency  
Stockholm, Sweden

#### Vincent McGee

United States  
Senior Advisor, The Atlantic  
Philanthropies  
New York, NY USA

#### Kevin Reilly, MBA

United States  
Former President, Wyeth Vaccines  
and Nutrition  
Rosemont, PA USA

#### Jay Satia, PhD **SECRETARY**

India  
Senior Advisor, Public Health  
Foundation of India, and Director,  
Indian Institute of Public Health  
Gandhinagar, India

### Executive Leadership Team

Ayorinde Ajayi, MD, MPH  
Vice President, Field Programs

Christopher J. Elias, MD, MPH  
President and CEO

Scott Jackson, MBA, CFRE  
Vice President, External Relations

Jacqueline Sherris, PhD  
Vice President, Global Programs

Eric Walker, MA  
Vice President, Corporate Services

### Program Leaders

John Boslego, MD  
Vaccine Development

Catherine Brokenshire-Scott, MPH  
South Africa

Mona Byrkit, MPH  
Vietnam

Carlos C. (Kent) Campbell, MD, MPH  
Malaria Control

Michael J. Free, PhD  
Technology Solutions  
Vice President and Senior Advisor for  
Technologies

Kateryna (Katya) Gamazina, MD  
Ukraine

Michelle Gardner, MSc  
Cambodia

Jane Hutchings, MPH  
Reproductive Health

F. Marc LaForce, MD  
Meningitis Vaccine Project

Christian Loucq, MD  
Malaria Vaccine Initiative

Mohammed Makame, MD, MPH  
Tanzania

Brian McLaughlin, MS  
Thailand

Anjali Nayyar, MS  
India

Julie Pulerwitz, ScD, ScM  
HIV/AIDS and Tuberculosis

Margarita Quintanilla, MPH  
Nicaragua

Catharine Taylor, MSc Econ  
Maternal and Child Health  
and Nutrition

Rikka Trangsrud, MA  
Kenya

John Wecker, PhD  
Vaccine Access and Delivery

Jiankang (Jack) Zhang, MS, MBA  
China

## INSTITUTIONAL SUPPORTERS

We are grateful to all of our supporters. This list includes institutions that contributed \$1,000 or more in donations or in-kind contributions to PATH.

### Foundations

The Atlantic Philanthropies  
Bill & Melinda Gates Foundation  
Charles Spear Charitable Trust  
Cleveland H. Dodge Foundation  
Conrad N. Hilton Foundation  
Elizabeth Glaser Pediatric AIDS Foundation  
Ford Foundation  
Foundation for Innovative New Diagnostics  
Horace W. Goldsmith Foundation  
International Child Support, Thailand  
The John D. and Catherine T. MacArthur Foundation  
Laird Norton Foundation  
Mariposa Foundation  
Martin Fabert Foundation  
The Maxine and Ray Frankel Foundation  
McKinstry Charitable Foundation  
Michael & Susan Dell Foundation  
MJ Murdock Charitable Trust  
Moccasin Lake Foundation  
The Moriah Fund  
Nike Foundation  
O'Keefe Family Foundation  
The Overbrook Foundation  
Raikes Foundation  
Robert Wood Johnson Foundation  
The Rockefeller Foundation  
Satya and Rao Remala Foundation  
Schwab Charitable Fund  
Scoob Trust Foundation  
Seattle International Foundation  
Snyder Family Foundation  
TEW Foundation  
The William and Flora Hewlett Foundation

### Governments and international agencies

Agencia Española de Cooperación Internacional Para el Desarrollo  
Canadian International Development Agency  
GAVI Alliance  
Health Systems Research Institute, Thailand  
Joint United Nations Programme on HIV/AIDS  
Ministry of Public Health, Thailand  
National Center for Parasitology, Entomology and Malaria Control, Cambodia  
National Health Security Office, Thailand  
National Institutes of Health  
Options Consultancy Services Limited  
Pan American Health Organization  
Thai Health Promotion Foundation

United Nations Children's Fund  
United Nations Development Fund for Women  
United Nations Educational, Scientific and Cultural Organization  
United Nations Population Fund  
US Agency for International Development  
US Centers for Disease Control and Prevention  
World Health Organization

### Other organizations and corporations

ABD Insurance and Financial Services, Inc.  
The AES Corporation  
Aetna  
Amgen Inc.  
Applera Corporation  
Audio Visual Management Solutions  
Bank of America Corporation  
Battelle Memorial Institute  
Berk & Associates  
Blistex Inc.  
BNBuilders, Inc.  
Boeing  
Cameron Catering  
CB Richard Ellis  
Chemonics International  
CollinsWoerman  
Convergint Technologies LLC  
Cooley Godward Kronish LLP  
Costco Wholesale Corporation  
Crown Agents  
Davis Wright Tremaine LLP  
Deutsche Gesellschaft für Technische Zusammenarbeit GmbH  
Electronic Arts, Inc.  
ExOfficio LLC  
ExxonMobil Foundation  
Gallagher Reppond  
GlaxoSmithKline  
Google Inc.  
HLSP  
Hotchkis and Wiley Capital Management  
ICF Macro  
Illinois Tool Works Inc.  
Incline Marketing Initiatives Inc.  
LoveToKnow Corp.  
McCrea Cellars  
MedImmune, LLC  
Merck & Co., Inc.  
Microsoft Corporation  
NBBJ  
Nike, Inc.  
Nutraset  
Nyhus Communications LLC  
OncoGenex Pharmaceuticals Inc.

The Partnership for Child Health Care, Inc.  
Pharmaceutical Research and Manufacturers of America  
PriTest Inc.  
Riddell Williams P.S.  
Seattle Biomedical Research Institute  
Seattle Children's  
Sellen Construction Company  
SkB Architects  
Stoel Rives LLP  
Swedish Medical Center  
Symetra Financial Corporation  
Temptime Corporation  
Universal Access to the Female Condom  
UST Global  
VECA Electric & Communications  
Vulcan Inc.  
Washington Biotechnology & Biomedical Association  
Western Asset Management  
The White Ribbon Alliance for Safe Motherhood

### Universities and nongovernmental organizations

Academy for Educational Development  
Basic Health International  
Center for Strategic and International Studies  
EngenderHealth  
Family Health International  
Global Partnerships  
Institute of International Education  
International Partnership for Microbicides  
International Planned Parenthood Federation  
International Potato Center/Centro Internacional de la Papa  
International Rescue Committee  
International Vaccine Institute  
IntraHealth International, Inc.  
Jhpiego  
John Snow, Inc.  
Johns Hopkins Bloomberg School of Public Health  
JSI Research & Training Institute, Inc.  
Partnership for Supply Chain Management, Inc.  
Research Triangle Institute  
Save the Children Federation, Inc.  
Tulane University  
University of Washington  
Washington State University



In addition, more than 1,500 individuals contributed flexible funds for PATH innovations.





2009 Winner, Conrad N. Hilton  
Humanitarian Prize, the world's  
largest humanitarian award

---

2009 Tech Award Laureate and Nokia  
Health Award Winner, The Tech Museum of  
Innovation, for Ultra Rice® Technology

---

Four-Star Charity, Charity Navigator



**MAILING ADDRESS**

PO Box 900922  
Seattle, WA 98109 USA

**STREET ADDRESS**

2201 Westlake Avenue, Suite 200  
Seattle, WA 98121 USA

206.285.3500  
info@path.org

[www.path.org](http://www.path.org)

Copyright © 2010, Program for Appropriate  
Technology in Health (PATH). All rights reserved.

Cover photo: PATH/Amynah Janmohamed.