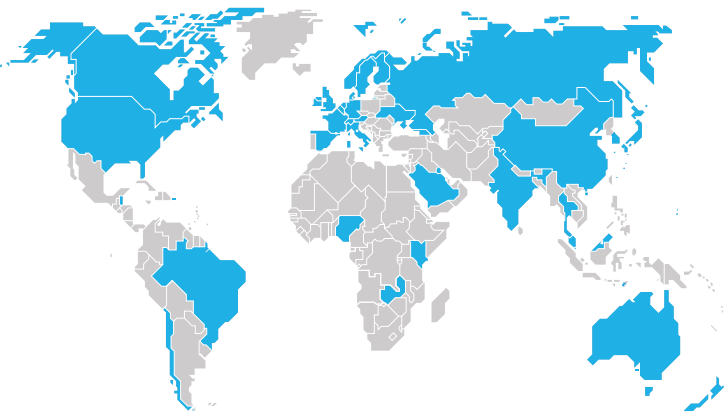


7,818 donors to the campaign



39 countries with supporters

87 Global Health Heroes

Global Health Heroes are a group of remarkable leaders who have stepped up to support the Reach Campaign with gifts of \$100,000 or more.

“PATH’s innovations are saving and transforming lives—and leaving a legacy of better health for women and children in the world’s poorest places. No other investment we make has the same reach or impact.”

Joel and Michelle Holsinger
Global Health Heroes



REACH CAMPAIGN **SNAPSHOT**

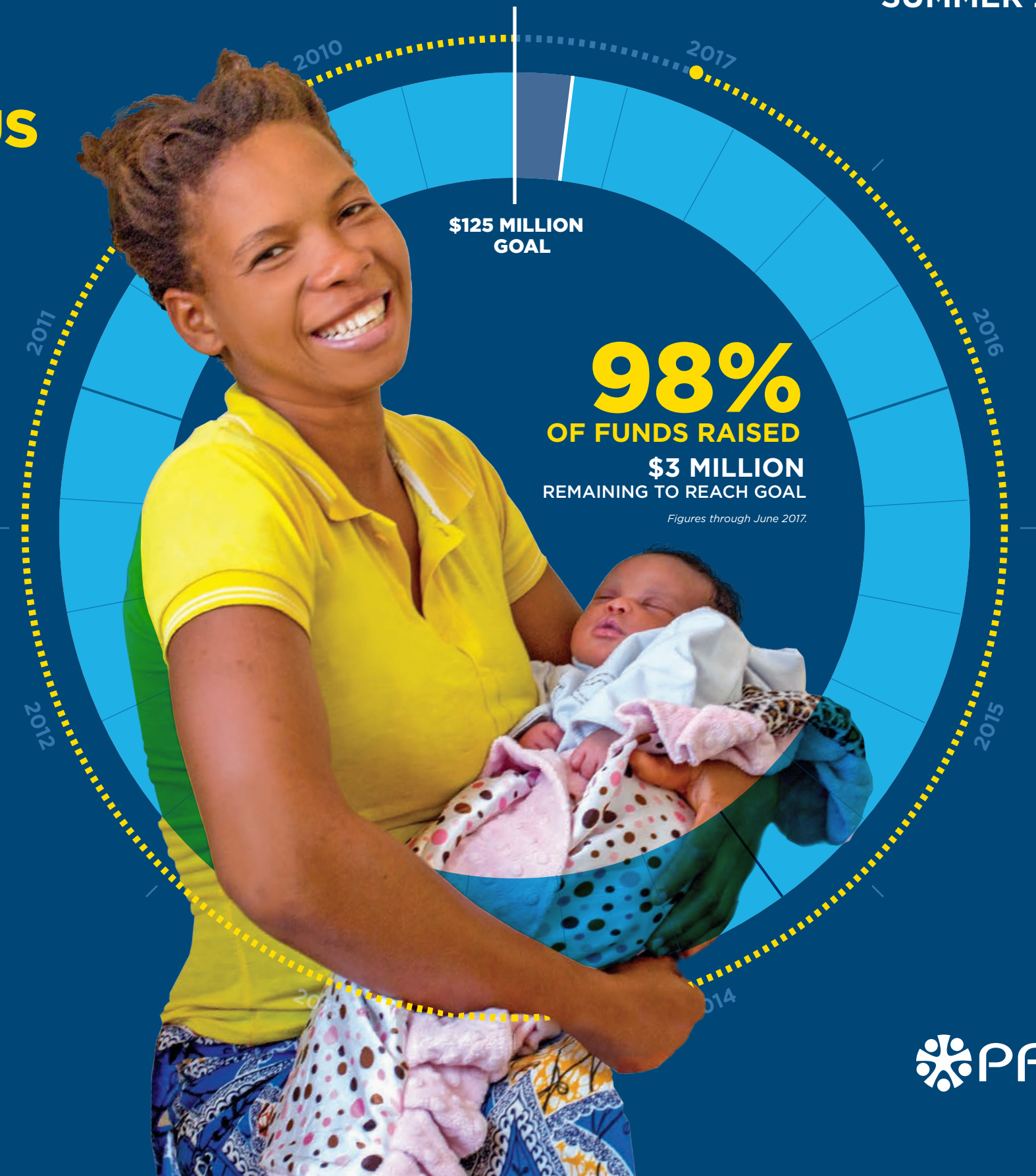
SUMMER 2017

AN AMBITIOUS MILESTONE—NOW WITHIN REACH

Thanks to the incredible response from donors like you, PATH is on the brink of reaching our \$125 million Reach Campaign goal.

Every dollar represents a step toward a world where every person has an equal chance to live a healthy, productive life and reach her full potential—no matter where she’s born.

Your support in the final stretch of the campaign will help us keep the momentum going and address new global health challenges and opportunities as they emerge.



YOUR IMPACT THROUGH THE REACH CAMPAIGN

TAKING WORLD-CHANGING SOLUTIONS TO SCALE

For 40 years, PATH-driven innovations have helped hundreds of millions of people build healthier futures. But for far too many women and children, the chance of a healthy life is out of reach simply because of where they live.

PATH's Reach Campaign is changing that.

The campaign has funded—and continues to fund—some of our most effective work, accelerating innovation in four areas that hold the greatest promise to improve the lives of the world's most vulnerable people. This snapshot highlights a few of the many advances PATH is making, thanks to your support.

Our Reach Campaign goal is now within sight, and we're heading full speed toward the future. We are doubling down on our commitment to health equity, continuing to build on the tremendous progress that our donor community has made possible.

Photos: top, PATH/Georgina Goodwin; bottom, PATH/Nguyen Phu Cuong



MALARIA ELIMINATION

Since 2000, PATH-pioneered approaches to malaria have contributed to nearly 7 million lives saved, and we continue to lead the way to a malaria-free world. The newest tool is an ultra-sensitive diagnostic, the Alere™ Malaria Ag P.f, which allows health care workers to detect very low levels of the malaria parasite in people who don't show symptoms of infection. PATH provided technical support for the test, which was developed by Alere.

As malaria-control efforts drive down the rate of infection in many areas, this affordable, easy-to-use test will be critical in tracking down and treating every last person who carries malaria—and halting the cycle of transmission.

WOMEN'S AND REPRODUCTIVE HEALTH

Myanmar has made a bold pledge to dramatically increase women's access to reproductive health rights and services—and they've asked PATH to help. During this critical moment in Myanmar's transition to democracy, PATH is working closely with the Ministry of Health and Sports, providing technical support to develop a new, comprehensive reproductive health policy for the country.

The updated policy framework—based on global standards and specific reproductive health needs in Myanmar—will ultimately increase access to quality reproductive health care for women of all ages, giving them the tools they need to thrive and provide their children a solid start in life.



MATERNAL AND NEWBORN HEALTH

Not long ago, Sendwe General Hospital in the Democratic Republic of the Congo lost three out of every five newborns in its neonatal intensive care unit (NICU)—devastating families and taking a painful toll on health care providers.

Then PATH intervened to improve newborn survival, collaborating with the Ministry of Health to provide an intensive 14-day training in newborn resuscitation and follow-up supervision. The results were dramatic: newborn deaths at Sendwe dropped by almost half. PATH also provided the NICU with the essential supplies and medicines it needed. Another 19 facilities in the country received similar training, supervision, and supplies. “Now we know what to do,” says Dr. Albert Nyembo, who directs the NICU, “and we have rescued many, many babies.”

CHILD HEALTH

No child should die of pneumonia. Yet, it kills more children under age five than any other infection—most of them in the poorest corners of the world, where the tools to treat it are often out of reach. Now, thanks to a PATH-led global campaign to make oxygen more accessible in low- and middle-income countries, young children with severe pneumonia will have a better chance of surviving. In June, the World Health Organization (WHO) added a new indication for oxygen to its model list of essential medicines, endorsing its use for managing hypoxemia, or dangerously low levels of oxygen in the blood, that is the hallmark of severe pneumonia.

The PATH campaign, and the resulting WHO policy change, will help countries prioritize oxygen access for the most vulnerable people—newborns, young children, and pregnant women. In some settings, it could reduce child deaths from pneumonia by as much as 35 percent.

“PATH is changing lives. We are excited to support their innovative approach to tackling some of the toughest challenges in global health and are inspired by the impact PATH is making today on the lives of countless families.”

Laurence and Michele Chang
PATH supporters

HOW TO GET INVOLVED

- Donate to PATH.
- Sign up for the *News From PATH* e-newsletter.
- Follow PATH on Twitter, and share our Facebook posts.
- Experience PATH's work first-hand on a PATH Journeys trip.
- Invite PATH to present at your company.



VISIT
reach.path.org and www.path.org

EMAIL
reach@path.org

CALL
206.302.4500

FOLLOW
f [PATHglobalhealth](https://www.facebook.com/PATHglobalhealth)
t [@PATHTweets](https://twitter.com/PATHTweets)

