



Wellcome's priorities and funding mechanisms

Global South Research Collaborative Webinar

Yolisa Nalule, Research Ecosystems Lead – Africa

Pierre Balard, Research Lead, Vaccine Product Development

December 2nd 2025

Who are we?

Wellcome is a global charitable foundation. Founded in 1936, we're based in London but work internationally

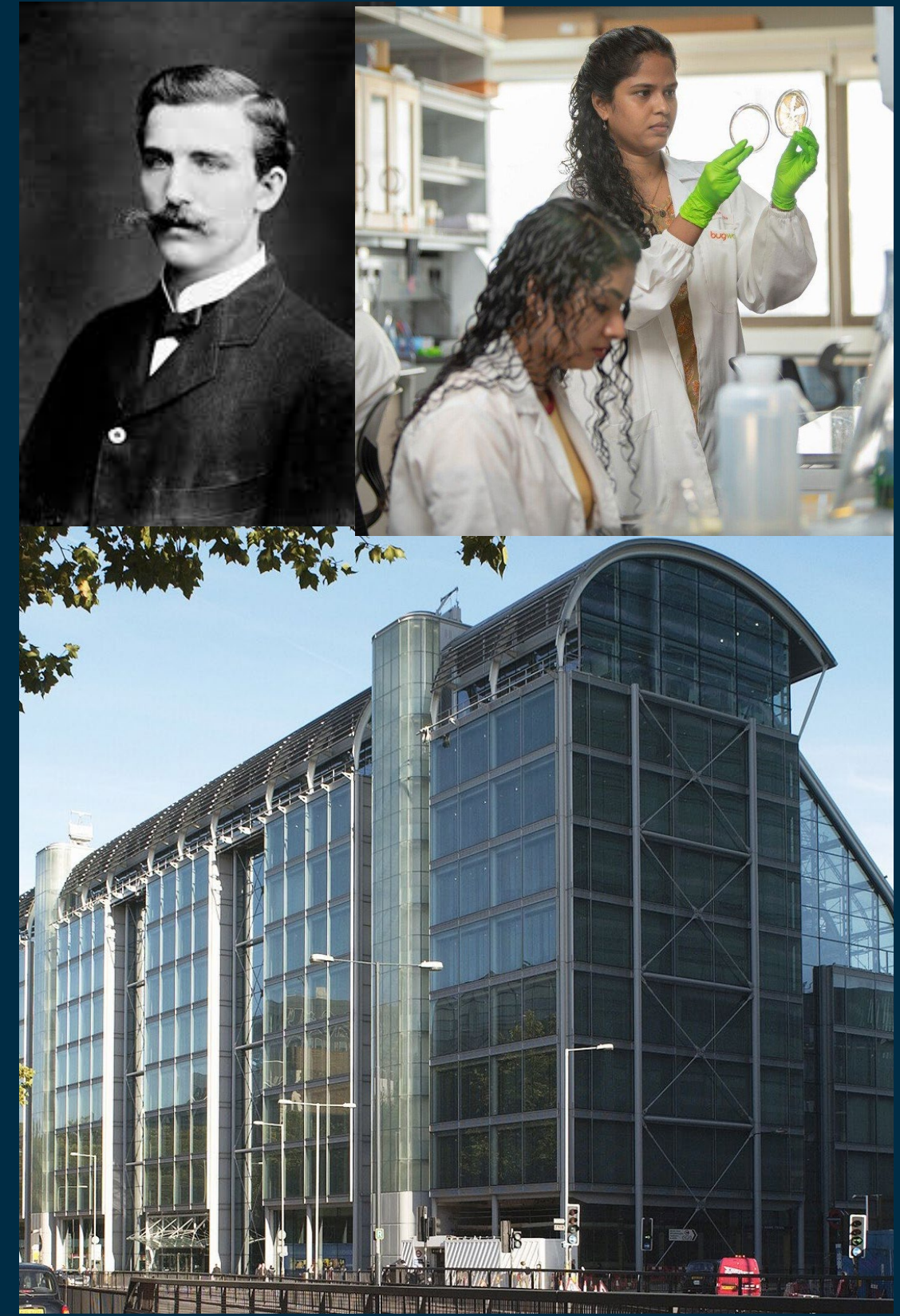
Our Mission:

Wellcome supports science to solve the urgent health challenges facing everyone

Our Vision:

A healthier future for everyone

2022 plan to spend £16bn over 10 years supporting science to solve the urgent health challenges facing everyone



What we do

Our mission brings us together behind a common purpose.

We use our mission to set our strategy and to describe what we're doing to improve health for everyone.



OUR MISSION

**We support
science to solve
the urgent health
challenges facing
everyone.**

Our strategy

5



Wellcome's strategy and approach



Discovery

By enabling people to ask questions about life, health and wellbeing, we will discover new knowledge with the potential to transform health in the future.

Discovery Research

Data for Science &
Health

Wellcome Collection

Solutions

By focusing on urgent health challenges where our experience, expertise and influence can accelerate solutions, we can have impact in the shorter term

Climate and Health

Infectious Disease

Mental Health

Science and Health Equity

To drive equitable health outcomes Wellcome advances inclusive practices that broaden the range of people, leading, participating in and benefiting from Science.

Equitable Research Ecosystems

Equitable Research Practice

Equity Lab

Workplace Equity

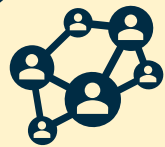
The strategy commits us to...

- Prioritising equity, diversity and inclusion as a critical approach to the science that we fund;
- Working in partnership with those making a difference in their communities through the research they do,
- Recognising that deep local and regional expertise is critical to drive change which leads to equitable and accessible solutions to benefit human health.



Equity is essential to our mission

To drive equitable health outcomes, Wellcome advances inclusive practices that broaden the range of people leading, participating in and benefiting from science



A diversity of people and perspectives are influencing and contributing to Wellcome's work



Discoveries and solutions supported by Wellcome are contributing to more equitable health outcomes



Wellcome's influence on policy, practice and the research system is delivering the greatest impact in communities most affected

Major international programmes



Kenya: Kilifi, Nairobi
Uganda: Mbale



South Africa:
Durban, Somkele
(KwaZulu Natal state)



Vietnam: Ho Chi Minh City, Hanoi;
Nepal; Indonesia

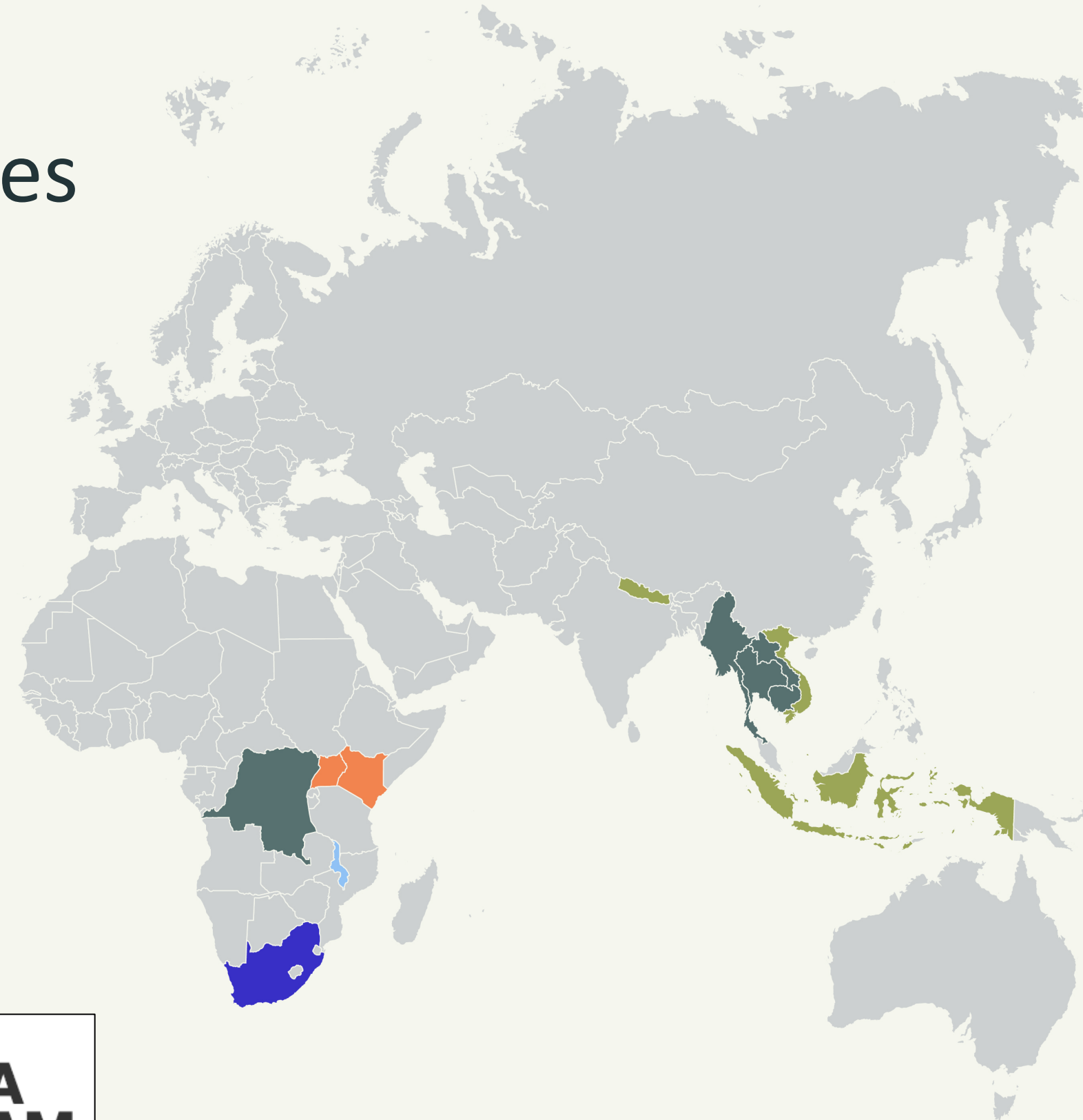


Thailand: Bangkok;
Laos; Cambodia;
Myanmar (Thai/Myanmar border);
India; Bangladesh;
the Democratic Republic of the Congo



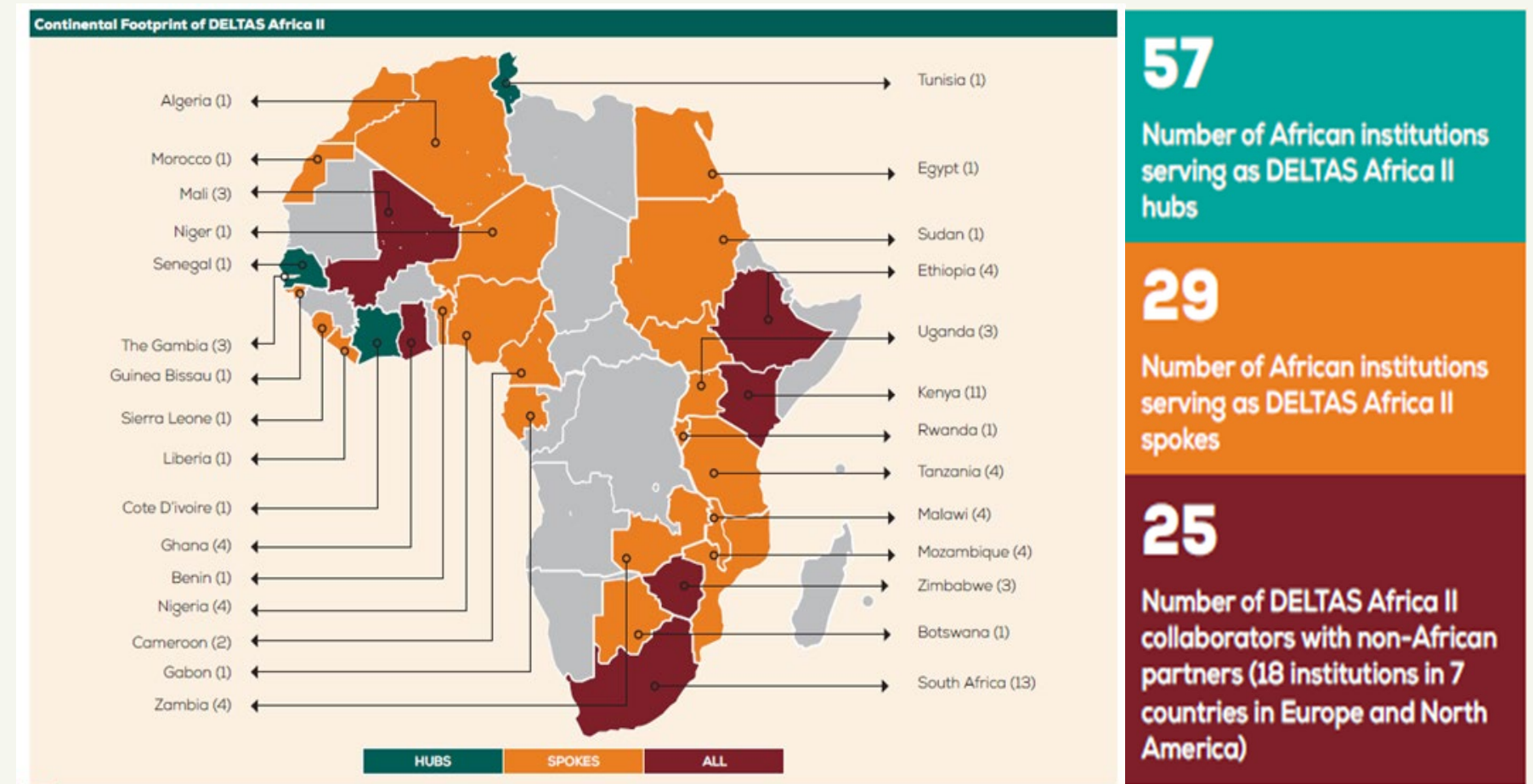
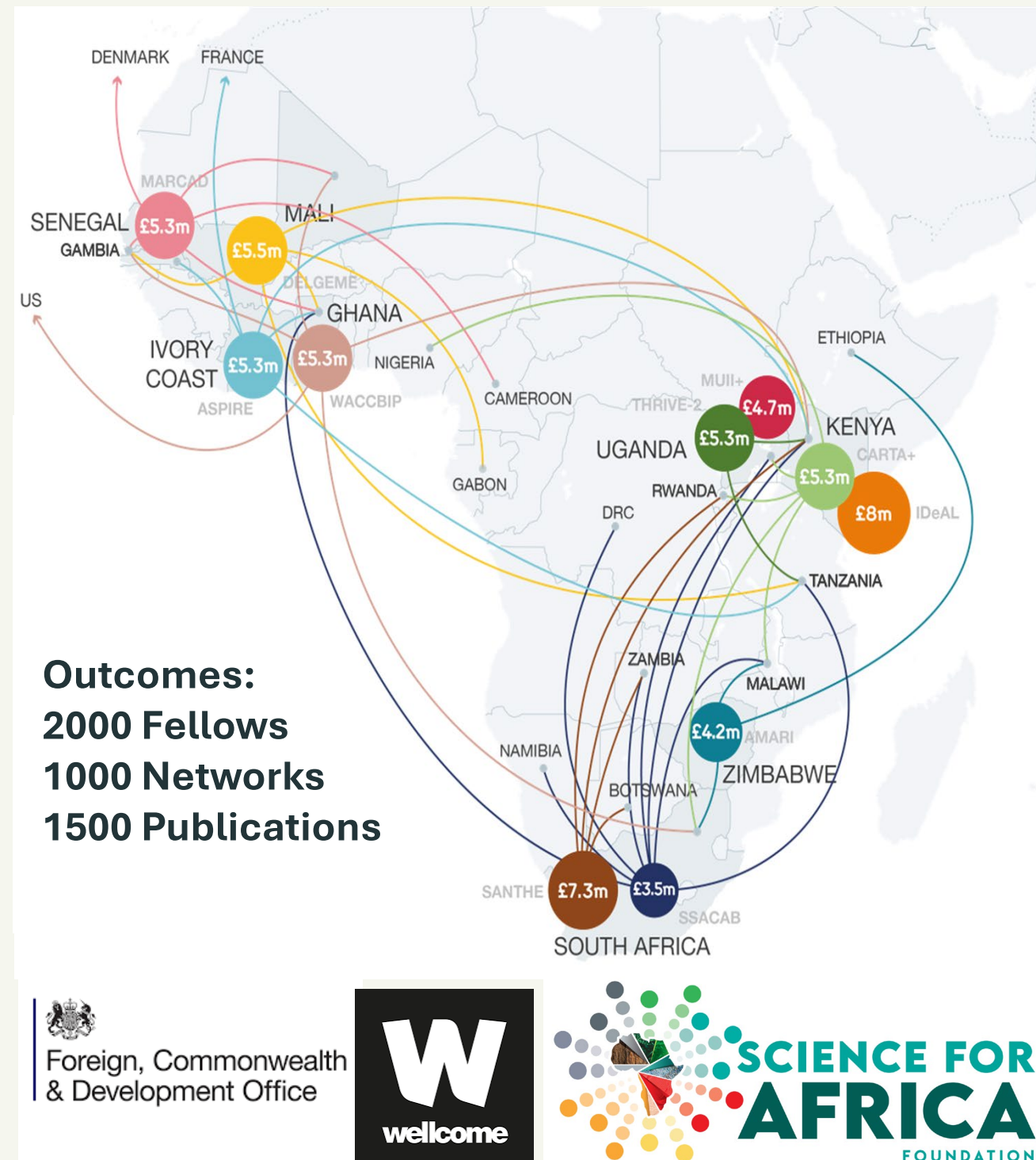
Malawi: Blantyre, Thyolo Chikhwawa

India Alliance



Developing Excellence in Leadership, Training and Science - DELTAS

- Funding to multiple African-led research consortia focussed on a specific thematic research area
- Open competition with multi country partnerships selected on their research excellence
- Consortia supporting and mentoring emerging research leaders and development pathways with supportive research environments



SEAMEO – SEA DREAM

Southeast Asia – Developing Research Excellence and Mentorship
(SEA DREAM)

Partnership with the Southeast Asia Ministers of Education
Organisation

WEBINAR: 18TH DECEMBER

Call for proposals: January 2026

<https://sea-dream.org/>



Types of funding

Open –mode funding (schemes)

- Competitive and recurring funding opportunities for researchers to apply to, with several funding rounds per year, established processes and controls, and defined criteria for application and assessment.
- The 3 main Open Mode schemes are in Discovery Research (DR)
- **Directed Funding**
 - Proactively identifies and pursues research and/or other activities in a particular area of interest to meet specific objectives within Wellcome's charitable aims.
 - This is strategic funding outside of established open mode funding.

Discovery Research open-mode funding schemes



Early Career Awards (ECA)

For researchers **ready to develop their research identity**

- Salary and up to £400,000 for research expenses (approximately 513,000 USD)
- Usually for 5 years
 - May be less in some disciplines
 - Longer if held part-time



Career Development Awards (CDA)

For researchers **with potential to be international research leaders** to develop their research capabilities

- Principal Investigator salary (if required) and resources needed for the programme of work (max 4 full time equivalent posts)
- Up to 8 years



Discovery Awards (DA)

For **established researchers and teams** to pursue bold and creative research

- Investigator or team led
- Single discipline or multidisciplinary
- International standing in the field
- Resources that are needed for the programme of work
- Up to 8 years

Open mode schemes

How to reach us:

For **remit and eligibility queries** regarding a specific application:

- Use the contact form on our website
- Email **fundingsupport@wellcome.org**
- Call +44 (0)20 7611 5757
- Live chat through our scheme and call pages

Feedback: Email us **discoveryresearch@wellcome.org**



Find out
more by
watching our
webinars

Directed funding

Discretionary awards

Contracts



One – off funding calls

Prizes

Pooled/Joint funding
initiatives

Directed funding example – Cholera vaccines



**Biovac**
69,160 followers
1w • Edited • 

A Historic Milestone for South Africa and the Continent. 🌍

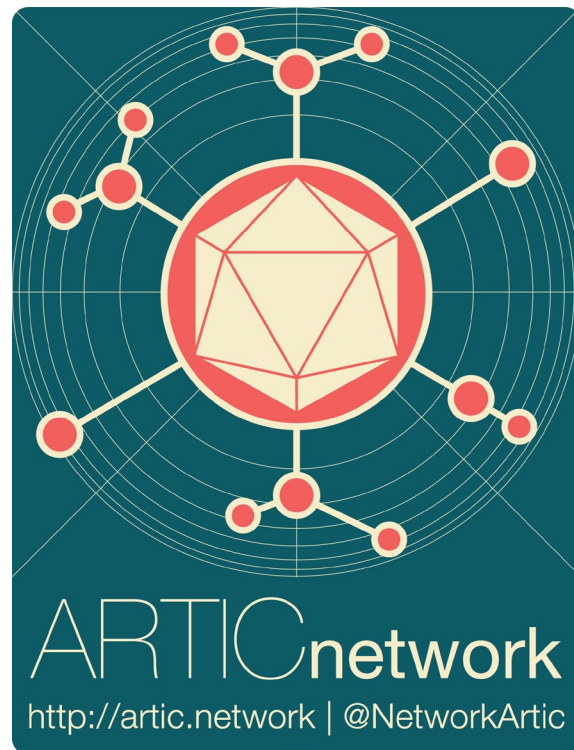
Today, Biovac, in partnership with the [South African Medical Research Council](#) (SAMRC), officially launched the clinical trial of the Oral Cholera Vaccine (OCV-S). This is South Africa's first self-made vaccine to start trial.

Hosted at the Perinatal HIV Research Unit (PHRU) at Chris Hani Baragwanath Hospital in Soweto, this landmark event brought together leaders from South African government, local & global science communities, and other participants to global health initiatives. Amongst our esteemed guests were the Honourable Minister of the [Department of Health South Africa](#), Dr Aaron Motsoaledi, and the Honourable Deputy Minister of the [Department of Science, Technology and Innovation](#), (DSTI), Dr Nomalungelo Gina.



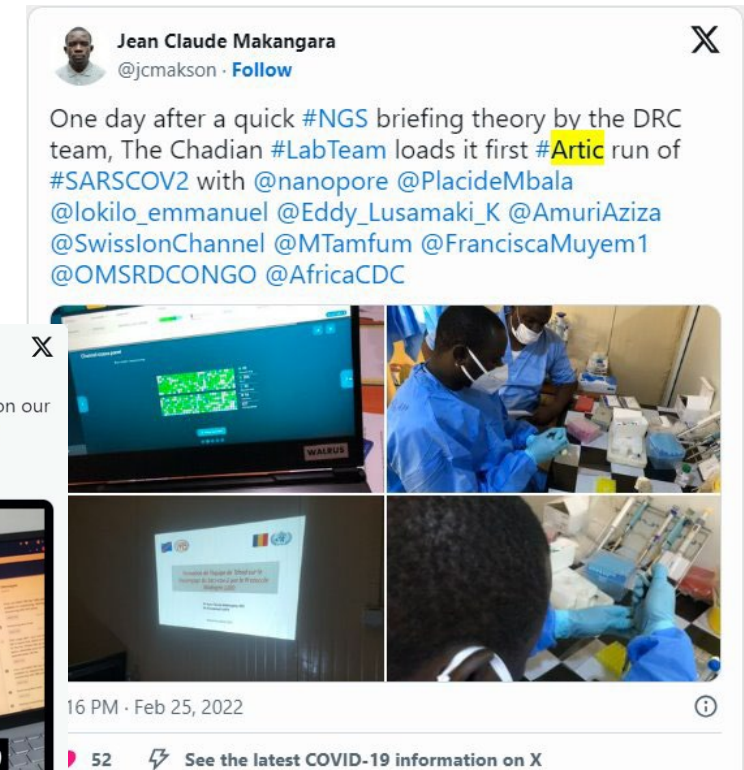
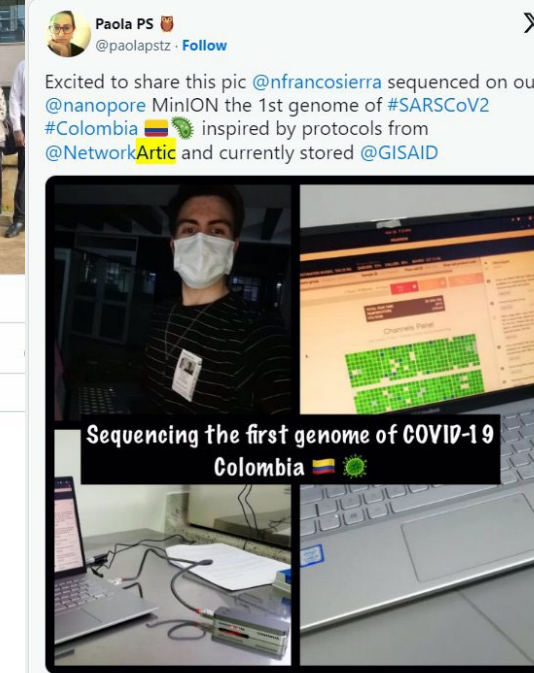
Child in the Kalundu neighborhood receiving the oral cholera vaccine during a government-led vaccination campaign in Uvira, Democratic Republic of Congo, December 14, 2023. Photo Esther Nsapu/Wellcome Trust

Directed funding example – Epidemiology



From Discovery to Solutions translation to impact

- Originally a Science Collaborator Award
- Demonstrated proof-of-principle in-field sequencing for viral epidemics
- Directed funding for ARTIC2.0 focusing on expanded use cases of portable sequencing and metagenomics for local priority pathogens e.g. arboviruses



Hub-and-spoke

West and Central Africa
SARS-CoV-2 sequencing support
WACCBIP
KEMRI-WT Regional partner

Train the trainer

ARTIC trained INRB who now
train other African partners
independently.
Uganda, Chad etc.

In-country sequencing and analysis

ARTIC-enabled “first” ever in-
country sequencing

Country ownership retained

Samples remain in country and
capacity built

We support research that has equitable health outcomes

This will ensure that the **benefit** is felt most by **those who whose health has the most to gain from science**



We only invest in research in **LMIC** contexts if **in-country researcher partners** are involved



We expect researchers to **engage research populations** before applying for funding and to have **included their needs and values** in the study design*



We require **Lived Experience Experts** to be a meaningful part of all the **mental health** research that we support†

*Where applicable. †Unless there are exceptional circumstances. LMIC, low- / middle-income country.



Thank you