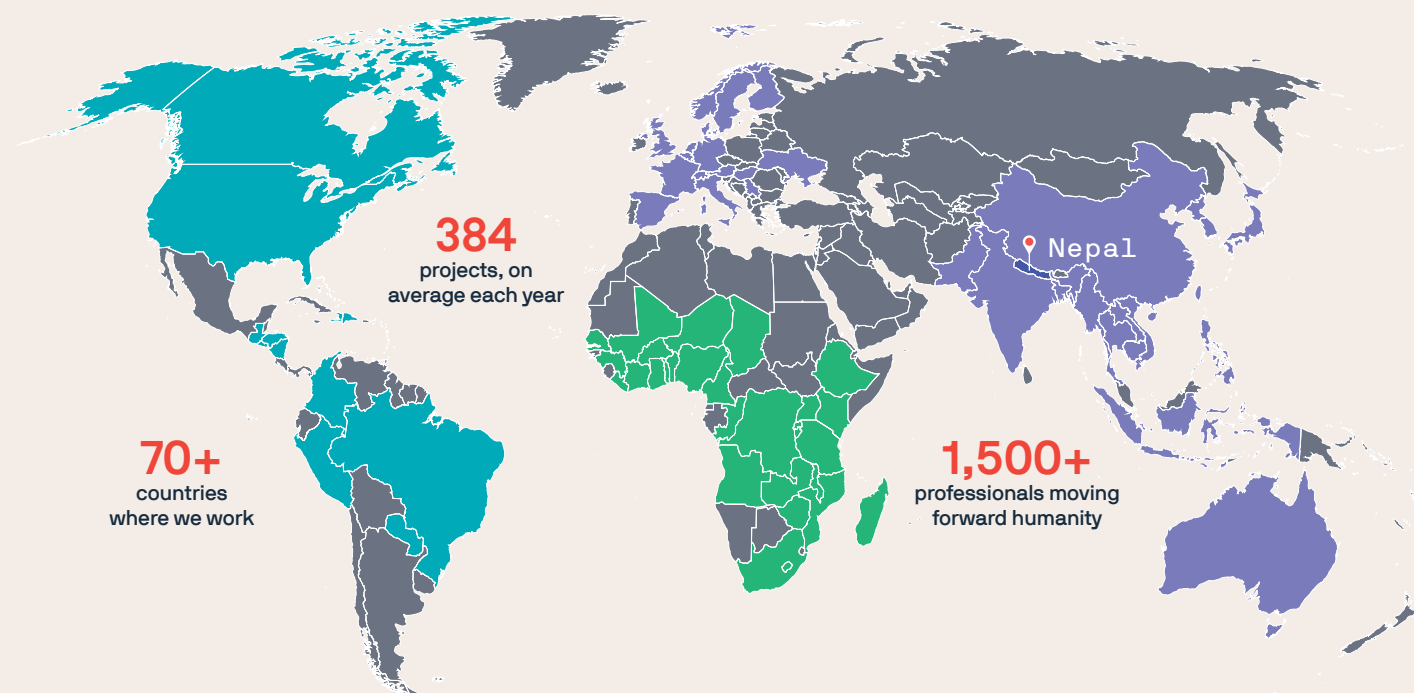


PATH in Nepal

PATH has worked in South Asia for decades, partnering with governments and local organizations to strengthen health systems. PATH began working in Nepal in 2014 and has since been expanding and scaling efforts to make good health possible for more people.

COUNTRIES WHERE PATH WORKS

- Africa Region
- Asia, Middle East, Europe Region
- Americas Region



Key Health Areas



Vaccines and Immunization



Neglected Tropical Diseases



Digital Health



Maternal, Newborn, Child Health and Nutrition



Disease Surveillance



Vaccine innovation from development to delivery

Using ingenious technologies and strategies, PATH works with the government of Nepal to increase immunization coverage. This includes work with the Bill & Melinda Gates Foundation and World Health Organization to develop an effective vaccine against shigella and our work with the government of Nepal for the introduction of the typhoid conjugate vaccine. The Shigella Value Proposition Project, jointly funded by the Bill & Melinda Gates Foundation and Wellcome Trust, was created in 2020 to establish the full public health value proposition for a Shigella vaccine.

We also support testing newer cold chain technology that would ensure safe transportation and delivery of vaccines. In collaboration with B.P. Koirala Institute of Health Sciences in Dharan, we conducted a field evaluation of freeze-preventive vaccine carriers in 24 health facilities. As part of the Vaccine Innovation Prioritization Strategy alliance (between the Gavi Secretariat, World Health Organization, Bill & Melinda Gates Foundation, United Nations Children's Fund and PATH), we did an assessment of vaccine technologies that are most suited for Nepal and identified three - microarray patches, heat stable formulations, and barcodes on primary packaging - that could revolutionize the delivery of vaccines and the immunization program.



Improving maternal, newborn, child health and nutrition

With decades of experience in South Asia supporting healthy pregnancies by establishing comprehensive lactation management centers (CLMC), PATH strengthens newborn nutrition and ensures safe pregnancy and delivery for mothers in Nepal. We promote human milk banking with an integrated approach that emphasizes providing breastfeeding and lactation support to all mothers, supporting them with milk expression and storage and empowering them to deal with lactation challenges. We also develop and scale digital systems for the management of CLMCs.





Disease surveillance for stronger health systems

PATH partners with local organizations to strengthen surveillance and treat and eliminate infectious diseases. PATH implements innovative solutions for increasing TB case notification and treatment adherence. We deploy artificial intelligence tools for TB diagnostics in remote locations in Nepal. As part of the pandemic response, PATH supported environmental surveillance of sewage for detecting and monitoring the spread of COVID-19. These activities, among others, are contributing to PATH's growing health system strengthening portfolio in the country.



Eliminating neglected tropical diseases

PATH played a pivotal role in the movement to stamp out neglected tropical diseases in Nepal. In collaboration with the Epidemiology & Disease Control Division, the Government of Nepal, and B.P. Koirala Institute of Health Sciences, we implemented a pharmacovigilance program to improve treatment options for visceral leishmaniasis (VL). We partnered with the Bill & Melinda Gates Foundation to advance diagnostics and case detection for VL. We supported in the development of point of need 'suitcase laboratory' based on recombinase polymerase amplification (RPA) assay for confirmatory molecular diagnosis of Kala-azar and Post Kala-azar Dermal Leishmaniasis (PKDL) cases in real-time.



