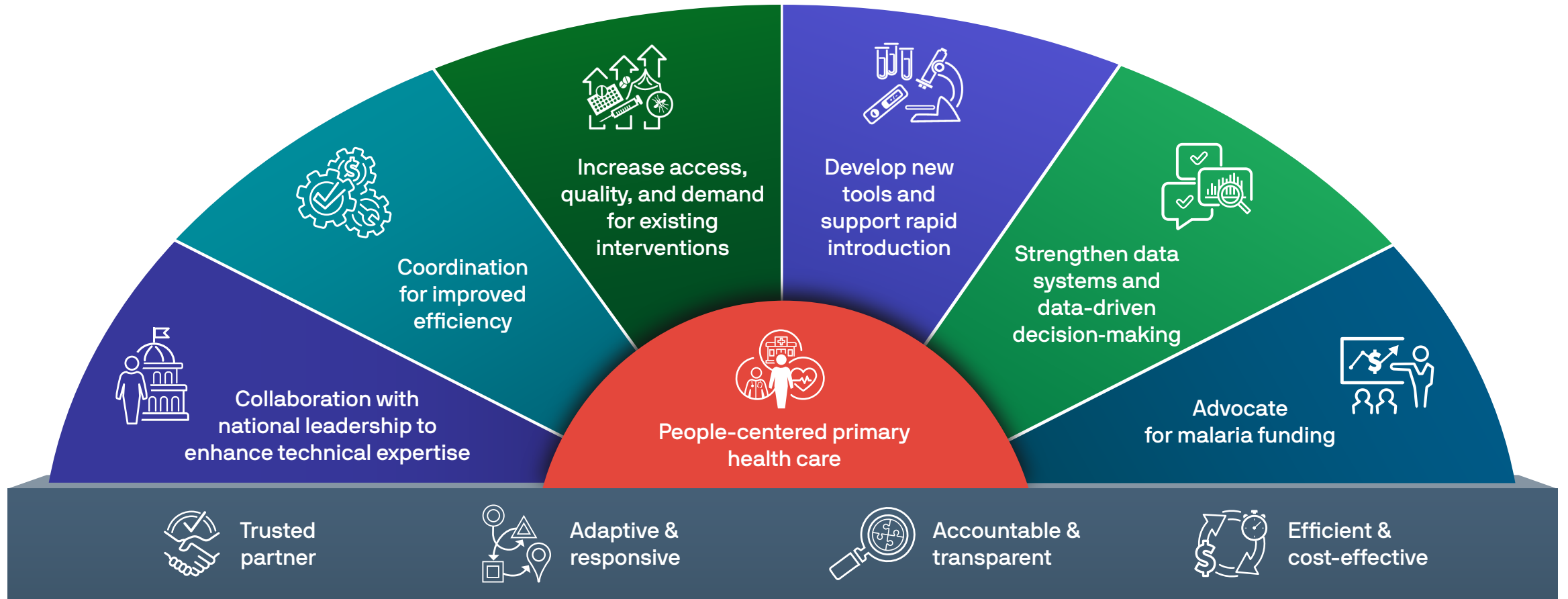


PATH Malaria Strategy 2026-2030



PATH Malaria Strategy 2026-2030



PATH operates within the global malaria ecosystem working in coordination with national programs and their partners to defeat malaria. We are committed to advancing seven core pillars that are essential to driving transmission down to zero,¹ and to operating with four core principles vital for maximizing impact.



People-centered primary health care

Advancing integrated systems and delivery, such as integrated community case management for improved child health

PATH is committed to advancing universal health coverage by strengthening health systems to deliver person-centered, high-performing services through primary health care. We are expanding access to integrated services at community level through integrated community case management approaches and the integration of nutrition with case management services. PATH is also strengthening comprehensive antenatal care that includes malaria prevention and supporting the integration of malaria vaccination within routine immunization programs.



Collaboration with national leadership to enhance technical expertise

Capacity strengthening with ministries of health, research and program leaders, and public health labs

PATH is home to thought leaders and technical experts with deep subject matter expertise, extensive experience working with national programs, and strong professional networks. We apply our expertise to strengthen capacity among ministries of health, research and program leaders, and public health labs in critical areas. These include research and analytical capacity; data- and model-driven decision-making; genomic surveillance; surveillance system and data quality assessments; strategic and operational planning; program management, budgeting, and cost efficiency; private sector engagement; management of antimalarial drug resistance; quality improvement approaches; and malaria vaccine introduction and scale-up.



Coordination for improved efficiency

Advance local/regional manufacturing, pre-qualification, and pooled procurement in Africa

PATH consistently works in close coordination with partners, often serving in key convening and coordination support roles. Our country program staff play a critical role in strengthening collaboration by supporting the development of efficient national malaria operational plans and guiding resource reallocation in response to global funding shifts and gaps. We are advancing pooled procurement mechanisms across African countries and optimizing diagnostics and surveillance to support malaria elimination efforts in Southeast Asia. We support regional manufacturing initiatives for malaria diagnostics and vaccines, as well as the expansion of the African Medical Association's capacity to evaluate diagnostics.



Increase access, quality and demand for existing interventions

Expand the reach of effective case management, chemoprevention, and immunization programs while mitigating threats such as antimalarial drug resistance

PATH is a trusted partner to ministries of health working to expand coverage of core malaria control interventions. We help ensure the delivery of chemoprevention strategies that protect infants and young children, and we are expanding the reach of effective case management in both health facilities and community settings. This includes efforts to scale the use of G6PD point-of-care testing and radical cure for *Plasmodium vivax* infections. We support increased access to immunization and the optimization of vaccination schedules for effective integration and improved coverage. As the threat of antimalarial drug resistance grows, we are strengthening national capacity to assess and mitigate risk.



Develop new tools and support rapid introduction

Product development and market access focused on next generation diagnostics and vaccines, and new tools and approaches such as mAbs

PATH is advancing product development for improved malaria diagnosis, treatment, and prevention from early concept through introduction and scale-up. We work through partnership and collaboration with a focus on evidence generation, introduction, and market access expansion for new diagnostic tools in case detection, treatment, failure monitoring, surveillance, and elimination efforts. We seek to contribute to the development and future introduction of next-generation fit-for-purpose² malaria vaccines and monoclonal antibodies.



Strengthen data systems and data-driven decision-making

Improve and expand data systems and capacity for data- and model-driven decision-making

PATH combines technical expertise and rigor with practical approaches to strengthening surveillance and data systems. We support surveillance assessments and targeted actions to improve system performance, including the use of artificial intelligence to streamline reporting; greater integration across platforms, such as integrated disease surveillance and the incorporation of community-level data into national systems; and the use of climate data to enable climate-informed surveillance. PATH addresses gaps in data, analytics, and modeling capacity, including for subnational tailoring and other data- and model-driven decision-making. We support therapeutic efficacy studies to monitor antimalarial drug efficacy, as well as commodity forecasting and uptake scenario planning.



Advocate for malaria funding

Support resource mobilization with evidence and advocacy, and through public-private partnerships

PATH is a key contributor to national and global advocacy and resource mobilization efforts. We generate and apply evidence to support investment decisions and help forge public-private partnerships. We prioritize leveraging co-funding opportunities to maximize the reach and impact of available resources.



Trusted partner

We consistently operate with integrity and respect for our partners and communities that we serve. We prioritize equitable partnerships that are mutually beneficial, respectful of partner leadership, and responsive to partner priorities and feedback.



Adaptive & responsive

We are nimble and flexible, understanding and adapting to changing realities to ensure that our work is consistently relevant, timely, and impactful. We prioritize data-driven adaptation, proactive management of complexity, a growth mindset and continuous improvement.



Accountable & transparent

We honor our commitments to donors and partners, and consistently provide evidence and documentation of our work. We prioritize a results orientation through setting targets and measuring progress. We value open and honest communication, and we consistently document and disseminate what we do, how we did it, and what we learned.



Efficient & cost-efficient

We find the most cost-effective ways to deliver impact and demonstrate value for money by applying rigorous discipline to resource use. We deliver projects on time, within budget, and that achieve the intended project results. We prioritize strong project management, operational excellence, and cost-effective structures.

PATH Malaria in Numbers

35+

Countries
with active projects

20+

Projects

9

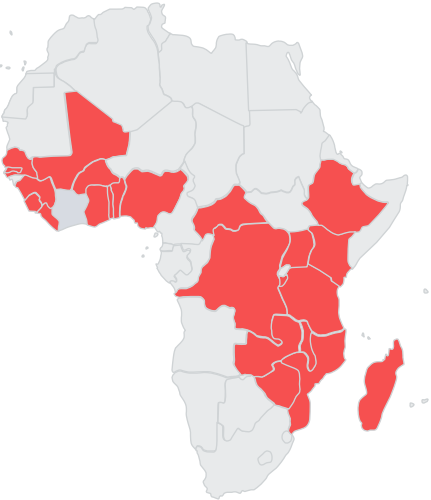
Donors



WHERE PATH MALARIA WORKS

Geographies with active projects as of 2026

Benin, Burkina Faso, Burundi, Central African Republic, Democratic Republic of the Congo, Ethiopia, The Gambia, Ghana, Guinea, Kenya, Liberia, Madagascar, Malawi, Mali, Mozambique, Nigeria, Senegal, Sierra Leone, Tanzania, Togo, Uganda, Zambia, Zimbabwe



Cambodia, India, Indonesia, Lao PDR, Myanmar, Papua New Guinea, Thailand, Vietnam

Belize, Brazil, Colombia, Guyana, Peru



For more information, contact:

Tarryn Haslam, Director, Malaria
and Neglected Tropical Diseases &
Epidemic Preparedness and
Response

malaria@path.org

¹ These pillars are central to the [RBM Big Push framework](#) designed to maximize coordination for impact against malaria, and are aligned with the [WHO Global Technical Strategy](#), the [2024 Yaoundé Declaration for a Big Push against malaria](#) by African Ministers of Health, as well as [PATH's approach to primary health care](#).

² PATH supports product development aligned with WHO preferred product characteristics for next-generation vaccines ([malaria vaccine PPC](#)) and monoclonal antibodies ([monoclonal antibodies PPC](#)).

