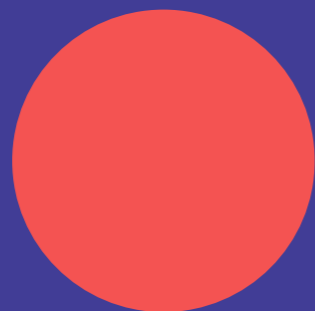




PATH in
Southeast
Asia



ABOUT PATH

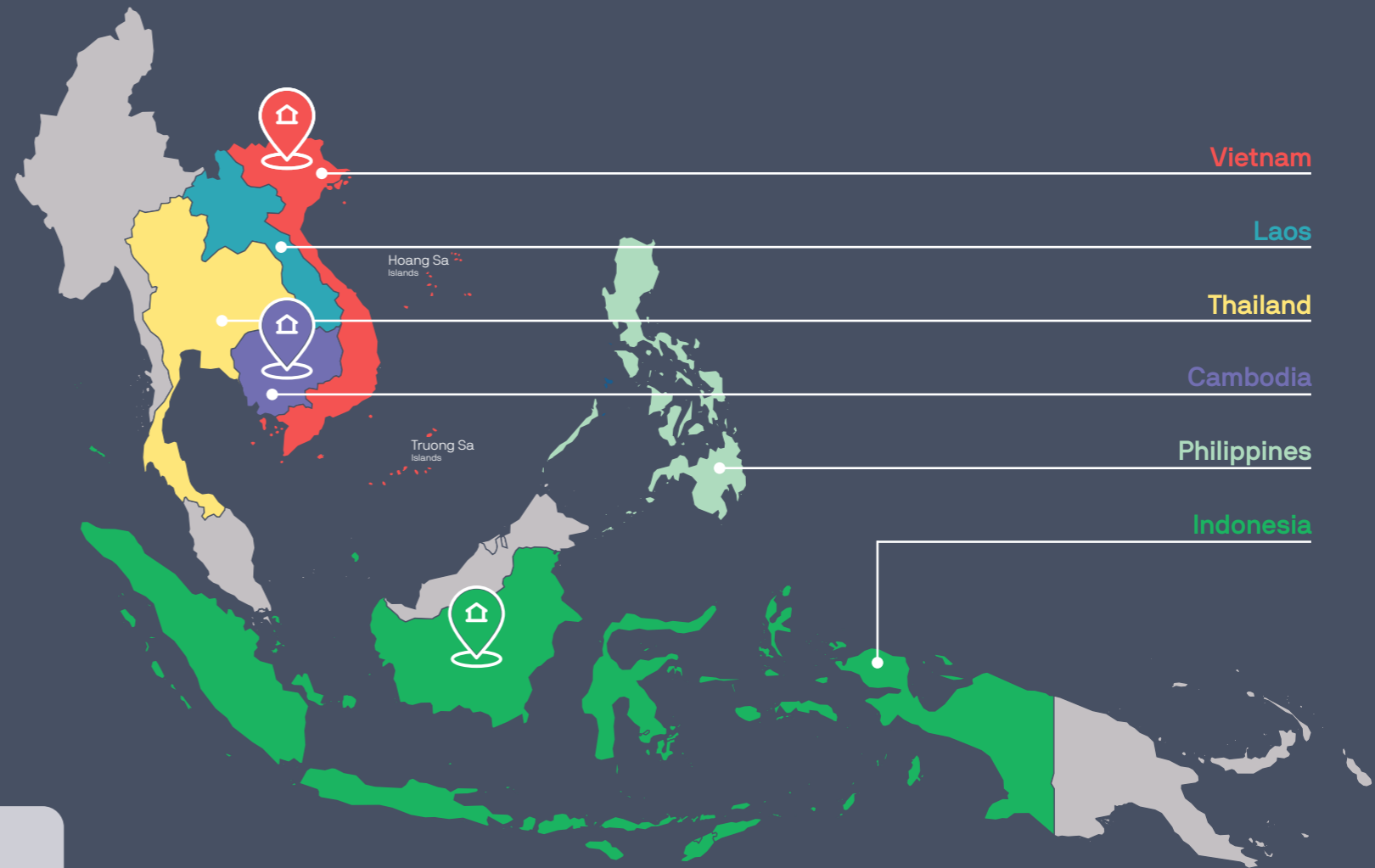
PATH is a global nonprofit dedicated to achieving health equity. With nearly 50 years of experience forging multisector partnerships, and with expertise in science, economics, technology, advocacy, and dozens of other specialties, PATH develops and scales up innovative solutions to the world's most pressing health challenges.

Cover photo: The Song Khoe (“Healthy Living”) mobile application supports screening, monitoring, and management of noncommunicable diseases (NCDs), particularly hypertension and diabetes, helping expand access to continuous, people-centered care at the community level. Photo: PATH

ADVANCING HEALTH ACCESS THROUGH INNOVATION AND PARTNERSHIPS

Since 1980, PATH has been working alongside leaders, communities, and local changemakers to develop sustainable systems for tackling shifting health challenges in six Southeast Asian countries: Vietnam, Laos, Indonesia, Cambodia, Thailand, and the Philippines. We support work across six focus areas: Primary Health Care, Infectious Diseases, Vaccines & Immunization, Epidemic Preparedness & Response, Digital Health & AI, and Climate & Health Resilience.

Today, as rapid social and economic changes continue to transform the region, we are leveraging our expertise in partnership with governments, the private sector, civil society organizations, and social entrepreneurs to advance health equity.



PATH'S VALUES



Respect



Impact



Innovation



Integrity



Equity



Collaboration



Countries with PATH offices

PATH'S GLOBAL IMPACT AT A GLANCE

2025 by the numbers

1B+

people reached by PATH-developed or -introduced vaccines

70+

countries with active PATH partnerships

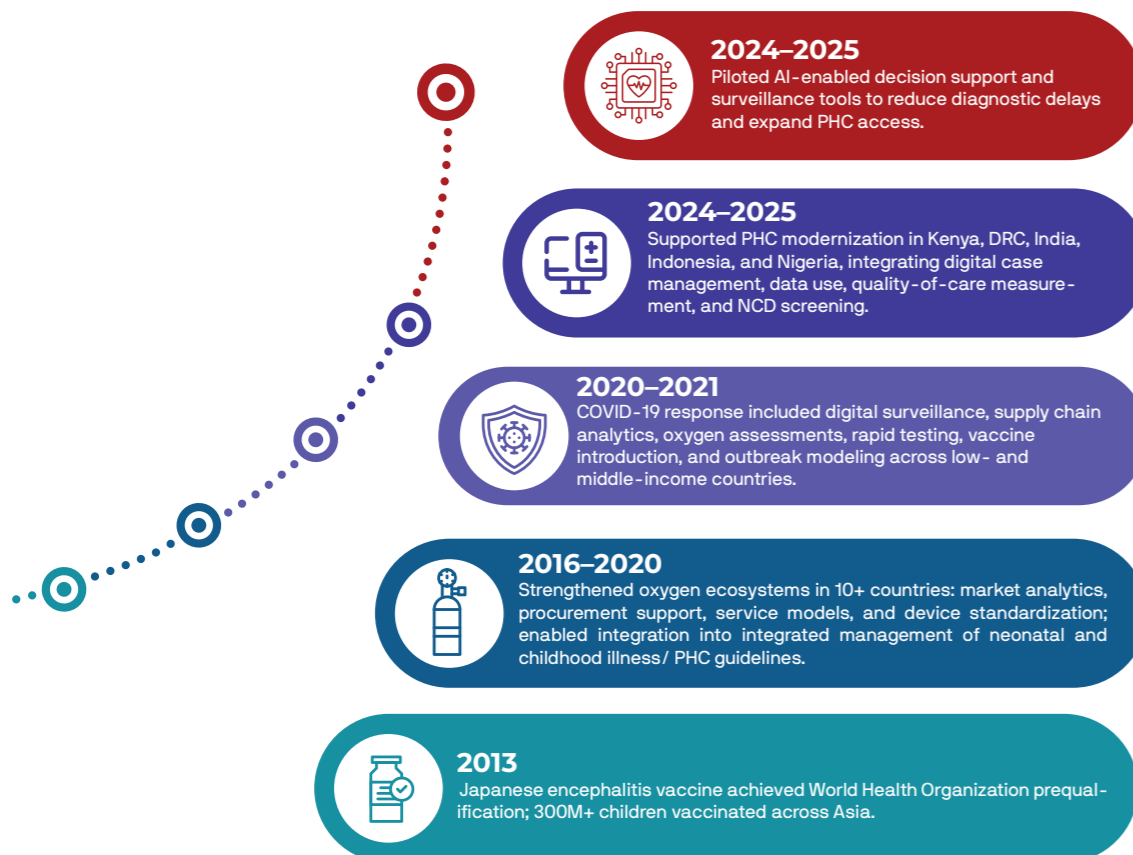
350+

active projects across vaccines, diagnostics, devices, and systems

\$371M

annual revenue (2024); 86% spent on programs

Selected key milestones



KEY AREAS OF WORK

Southeast Asia Hub

- Primary Health Care
- Infectious Diseases
- Vaccine & Immunization
- Epidemic Preparedness & Response
- Digital Health & AI
- Climate & Health Resilience



Shared-value partnerships

Enhancing partnerships with governments, the private sector, civil society, and other stakeholders.



Health systems innovation

Improving quality, efficiency, and resilience of health systems through client-centered approaches.



Collaboration and learning

Driving quality improvement and effective social and behavioral change.



Digital, data, and AI

Leveraging interoperable digital health systems and advanced analytics to strengthen decision-making, expand reach, and enhance disease surveillance.



Implementation science

Co-creating and scaling inclusive, evidence-based health innovations.



Equity and climate responsiveness

Advance people-centered care and climate-responsive approaches to promote equity.

PRIMARY HEALTH CARE

PATH strengthens primary health care (PHC) as the foundation of resilient health systems across Southeast Asia. We connect care across all levels of the health system, support communities, and leverage digital innovation to make health services more equitable and people centered.



Community member receiving blood pressure screening as part of integrated primary health care services in Vietnam. Photo: PATH.



Vietnam's first human milk bank supporting high-risk infants through integrated maternal and newborn care services. Photo: PATH.

Focus areas and capabilities

- **Strengthening PHC systems:** Promote systems governance, build capacity for human resources, and expand the package of essential services to improve accessibility and quality of care.
- **Introduce and promote innovative and integrated care models:** Apply human-centered design, empower community-based approaches with strong local engagement, and promote integration of PHC services to ensure care is responsive and inclusive.
- **Enhance mental health care:** Conduct assessments of mental health care status, develop tools to support service delivery, and leverage digital communication strategies and social media to raise awareness and improve access.
- **Improve public supply chains:** Access supply chains for essential drugs and diagnostics, strengthen sustainably financed systems, and build the capacity of the health supply chain workforce and infrastructure.
- **Promote digital transformation, innovation, and system interoperability:** Leverage digital solutions and frontier technologies. Apply international and national standards to modernize PHC delivery and ensure that systems work seamlessly together.

Advancing women's health through integrated primary health care programs

- **Strengthen Maternal, Newborn, Child Health & Nutrition Systems:** Support ministries of health to strengthen MNCHN governance, develop national strategies and guidelines, improve data systems for evidence-based decision-making, and build workforce capacity through training and regional learning exchanges.
- **Introduce community-centered and innovative care models:** Establish and scale innovative solutions such as Vietnam's first human milk bank for high-risk infants, strengthen community action to reduce maternal mortality, and expand appropriate health technologies in low-resource settings.
- **Advance preventive and integrated health services:** Partner with governments to pilot and scale cervical cancer "screen-and-treat" models, strengthen referral systems, and improve integrated child health interventions, including diarrheal disease control.



Students participating in physical activity sessions under the Community Sport and Health Cooperation Initiative, Nghe An Province, 2025. Photo: PATH/Ha Nguyen.



Patient receiving G6PD quantitative testing to support radical cure treatment for malaria. Photo: PATH.

INFECTIOUS DISEASES

PATH accelerates access to lifesaving prevention, diagnostics, and treatment for HIV, tuberculosis (TB), viral hepatitis, and malaria—powered by innovation, digital solutions, and multisector partnerships.



Community-based HIV testing and counseling services supported through people-centered and accessible care models. Photo: PATH.

Focus areas and capabilities

- Implement innovative and scalable models of care:** Introduce and scale up HIV and hepatitis C virus self-testing and PrEP services; strengthen integrated approaches for coinfections and maternal-child disease prevention; and support improved TB, malaria, and HIV diagnostics and treatment systems.
- Drive social and behavioral change:** Co-create behavior change solutions with communities; strengthen provider capacity; and leverage social media and digital platforms to promote effective outreach and demand generation.
- Employ digital solutions and technologies:** Support the government of Vietnam to strengthen electronic medical records, digital health systems, and mobile/web-based tools for client care, adherence, and disease surveillance.
- Strengthen laboratory and diagnostic capacity:** Expand molecular testing and point-of-care diagnostics for TB and malaria, while improving laboratory systems for timely disease detection.
- Facilitate market shaping and sustainable:** Support access to innovative health products through market intelligence, regulatory support, and policy advocacy across HIV, hepatitis, TB, and malaria.
- Strengthen public-private partnerships:** Engage the private sector and communities to advance client-centered and innovative health care models.

VACCINES & IMMUNIZATION

PATH advances vaccine innovation across the region—strengthening systems, scaling local vaccine development, and digitizing immunization for greater equity.



Child receiving routine immunization services in a low-resource and underserved community. Photo: PATH.

Focus areas and capabilities

- **Strengthen immunization systems:** Enhance immunization services through capacity-building, microplanning, and last-mile delivery to prevent backsliding and reach underimmunized populations, including zero-dose children. Increase community knowledge and generate demand for vaccination.
- **Introduce new vaccines and bolstering vaccination:** Support the integration of new vaccines into routine immunization programs, test delivery strategies, and implement catch-up campaigns to improve coverage of underutilized vaccines.
- **Manage the vaccine supply chain:** Strengthen good storage practices at all levels, improve cold chain management, and demonstrate innovative tools and devices for vaccine storage and distribution.
- **Accelerate local vaccine development:** Support the development, clinical trials, and licensing of new vaccines. Build sustainable regional manufacturing capacity, and strengthen quality management and pharmacovigilance systems.
- **Digitize the immunization information system:** Develop, pilot, and scale electronic immunization registries. Improve data quality and use and support the transition to paperless systems at all levels



Mother and baby are waiting for an immunization session at a commune health center. Photo: PATH/Cuong Nguyen.

Factory workers participating in occupational health and COVID-19 prevention activities to support safer workplaces during the pandemic response. Photo: PATH.



Health care workers participating in infection prevention and control and PPE training under the US CDC Global Health Security program to strengthen hospital preparedness and outbreak response capacities in Vietnam, prior to the COVID-19 pandemic. Photo: PATH.

EPIDEMIC PREPAREDNESS & RESPONSE

PATH strengthens health security across Southeast Asia through a One Health approach—integrating human, animal, and environmental health systems for early disease detection, coordinated response, and long-term resilience.

Focus areas and capabilities

- **One Health governance and systems strengthening in Cambodia:** Support the One Health for Cambodia initiative through strengthened governance and coordination mechanisms, interoperable data platforms, provincial One Health Centers of Excellence, laboratory systems in Battambang, specimen referral systems, and integrated surveillance, epidemic preparedness, and response.
- **Strengthen infection prevention and control (IPC):** Develop and operationalize national IPC guidelines, health care–associated infection surveillance systems, quality improvement initiatives, and workforce capacity-building to improve patient safety and reduce infection risks.
- **Combat antimicrobial resistance (AMR):** Support national multisectoral AMR strategies; strengthen AMR and antimicrobial consumption surveillance; establish interoperable laboratory and hospital information systems and digital reporting platforms; promote antimicrobial stewardship; and strengthen cross-sectoral coordination.
- **Enhance surveillance systems and emergency preparedness:** Strengthen integrated disease surveillance, event-based surveillance, early warning systems, and subnational public health emergency operations centers to improve outbreak detection, reporting, and rapid response.
- **Optimize laboratory and diagnostic networks:** Strengthen integrated laboratory and diagnostic networks, specimen referral systems, hub-and-spoke models, and digital laboratory information systems to improve zoonotic and emerging pathogen detection.
- **Advance pandemic preparedness and health system resilience:** Strengthen preparedness for emerging infectious diseases and zoonotic threats, improve access to medical oxygen and respiratory care, digitalize surveillance systems, and support resilient health systems and communities.

DIGITAL HEALTH & AI

- **Drive digital transformation and AI across health programs:** Apply digital health, AI, and interoperable data systems to strengthen health systems, improve service delivery, inform public health response, and support evidence-based decision-making.
- **Develop integrated and interoperable digital health systems:** Support governments to strengthen interoperable surveillance, laboratory, immunization, and health information systems for cross-sector data integration.
- **Leverage predictive analytics and early warning systems:** Integrate AI-powered dashboards, predictive analytics, and real-time monitoring systems to strengthen epidemic preparedness and rapid response capacities.

Government leaders, PATH, and partners at the launch of the One Health for Cambodia initiative to strengthen coordinated human, animal, and environmental health systems.
Photo: PATH.



PATH team members supporting an antimicrobial resistance technical assistance visit under the US CDC Global Health Security program at Viet Tiep Hospital, Hai Phong, 2019. Photo: PATH.

CLIMATE AND HEALTH RESILIENCE

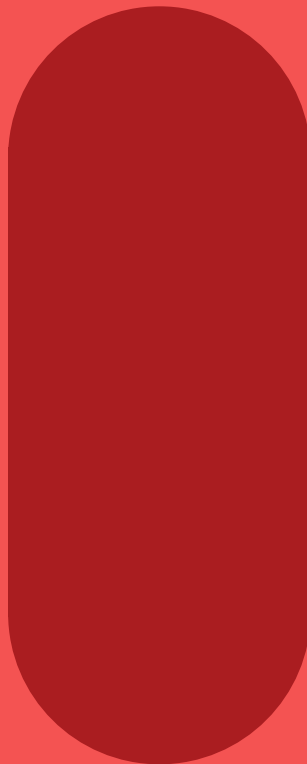
- **Advance climate and health resilience across sectors:** Develop interoperable climate-health data systems to support real-time risk assessments and anticipatory One Health actions.
- **Strengthen climate-informed epidemic preparedness and response:** Apply climate-informed predictive modeling, early warning systems, and integrated surveillance platforms to improve outbreak preparedness and response.
- **Promote technology-driven, future-ready health innovation:** Foster cross-sector partnerships and scalable digital innovations to strengthen resilience, equity, and sustainability across health systems.



Unit 1105, 11th Floor, Hanoi Tower
49 Hai Ba Trung Street, Cua Nam Ward
Hanoi City, Vietnam

Tel/ +84 24 3936 2215

Email/ vietnam@path.org



WWW.PATH.ORG

 [/PATHglobalhealth](https://www.facebook.com/PATHglobalhealth)

 [company/PATH](https://www.linkedin.com/company/PATH)

 [/globalhealthcatalyst](https://www.youtube.com/channel/UC...)

 [/pathglobalhealth](https://www.instagram.com/pathglobalhealth)