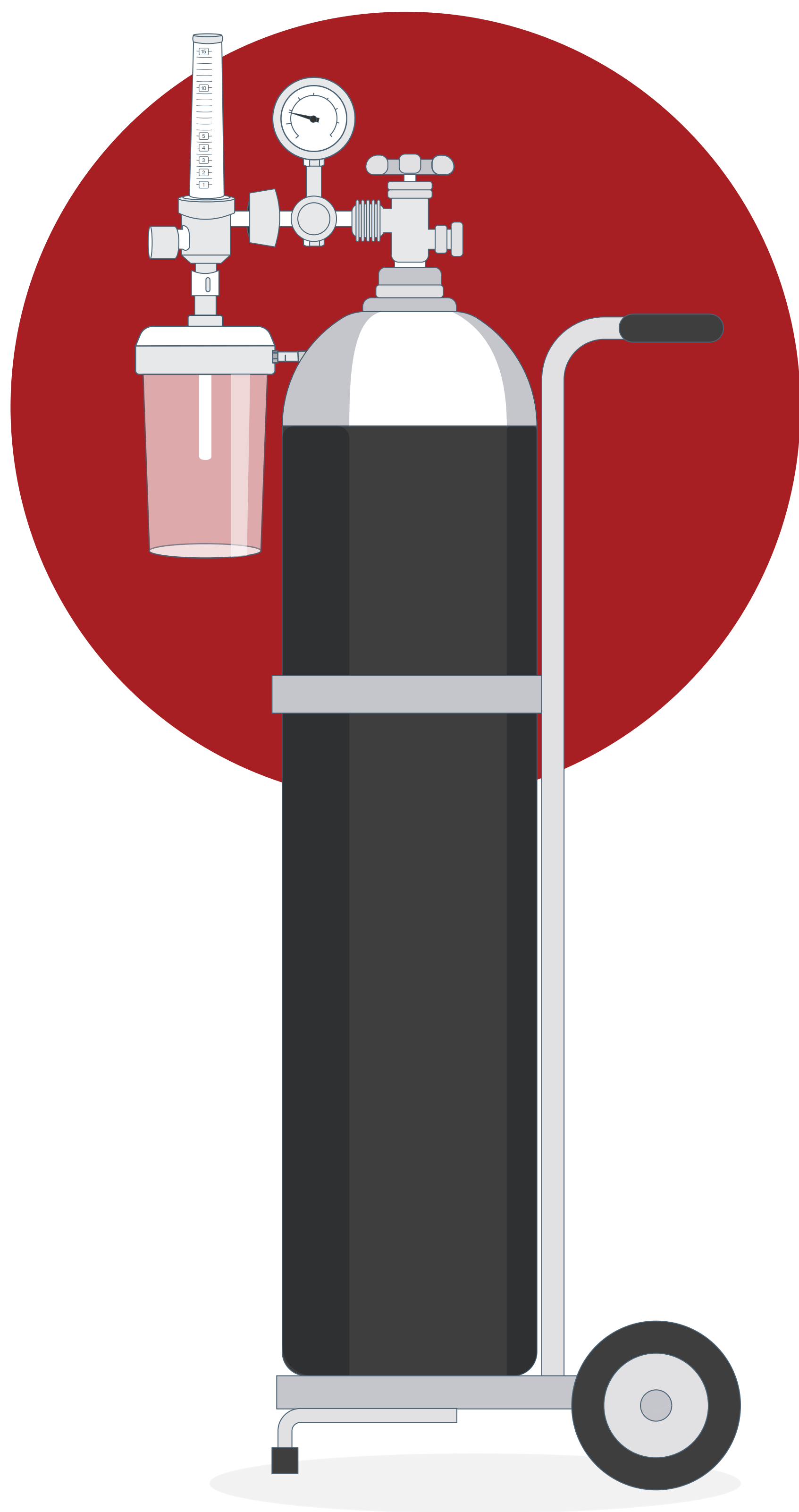
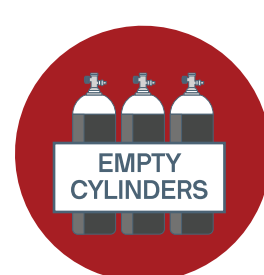


Oxygen Cylinders and Associated Accessories

Common Problems and Troubleshooting Guide

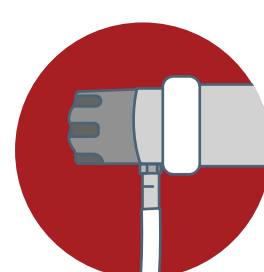


Oxygen is not flowing



The cylinder is empty

- Replace the cylinder



Flowmeter knob or cylinder valve is closed

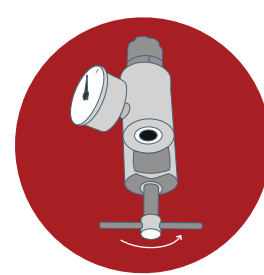
- Open the cylinder valves and regulator knob; check whether the pressure gauge & flow-meter registers readings



The regulator is faulty

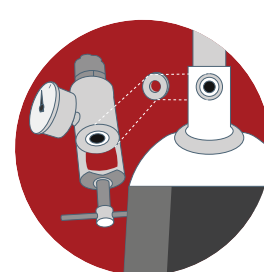
- Close all the valves and replace the regulator

Leakage from the cylinder or the flowmeter



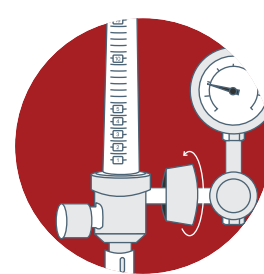
Cylinder is not properly connected to pressure regulator

- Tighten all the fittings



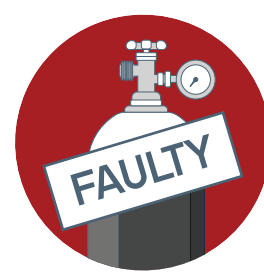
Faulty or missing washer between the regulator and the cylinder

- Replace the washer



The flowmeter seal is damaged or is loose.

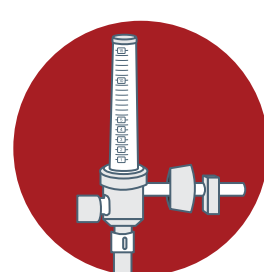
- Replace the sealing washer and realign the flowmeter



Faulty cylinder

- Label the cylinder as faulty and take appropriate action

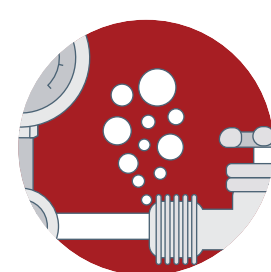
The flowmeter ball is not moving, yet the oxygen is flowing



Faulty flowmeter

- Close all the valves, disconnect the flowmeter and clean the insides of it. Reconnect the flowmeter and the valves, and test it
- If problem persists, replace the flowmeter

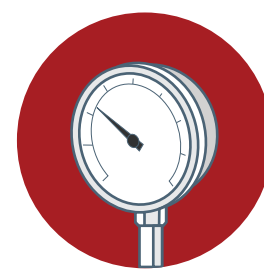
Leakage cannot be located



Leakage is too small to be heard

- Apply soap/detergent water solution to joints.
- Bubbles will show at leak point, Clean/replace the washer and tighten those joints

Pressure gauge does not show pressure, yet the oxygen is flowing



Faulty pressure gauge

- Replace the pressure gauge



Faulty diaphragm of regulator

- Replace regulator diaphragm

Refer to user and service manuals for more guidance;
repair & maintenance to be conducted by trained and authorized technician ONLY

Disclaimer : This poster has been adapted and customized from PATH's Oxygen Delivery Toolkit.