

SD BIOLINE Lymphatic Filariasis IgG₄

Quick Reference Guide

For more detailed instructions please refer to Package Insert.

Caution:
DO NOT USE THE TEST MORE THAN ONCE.

Before you begin:

- Please read the Instructions for use in its entirety, prior to use.
- Cover your work space with a clean, disposable absorbent workspace cover.
- All components must be brought to room temperature (between 15-30°C) prior to testing.

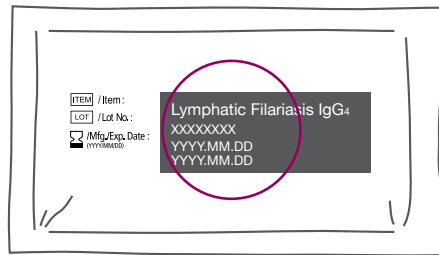
Preparation:

- Test pouch (Test Device)
- Assay Diluent
- Alcohol swab
- Lancet
- Disposable capillary pipette (10µl)
- Timer & Disposable Gloves (Not Provided)

1

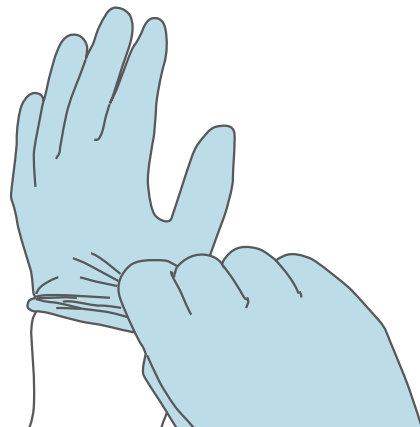
Check the expiry date.
If expiry date has passed, use another kit.

Check the desiccant.
If the color is green, use another kit.



2

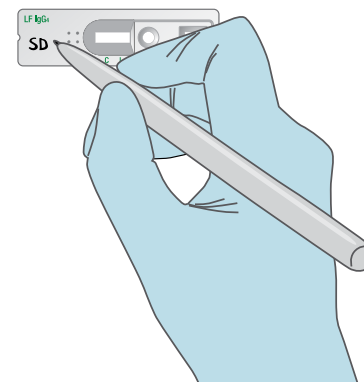
Put on the gloves.
Use new gloves for each patient.



3

Open the test pouch and label with the patient ID.

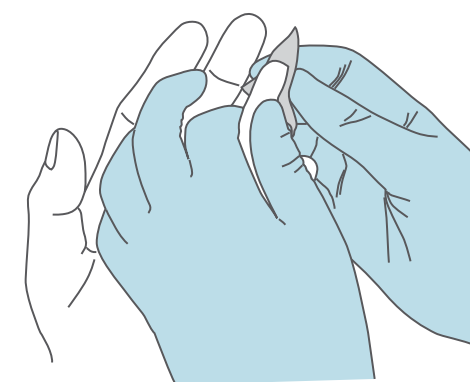
Do not use labels that obstruct the air openings.



4

Open the alcohol swab. Grasp the 4th finger of the non-dominant hand.

Clean the finger in a circular motion. Allow to air dry for 10 seconds.

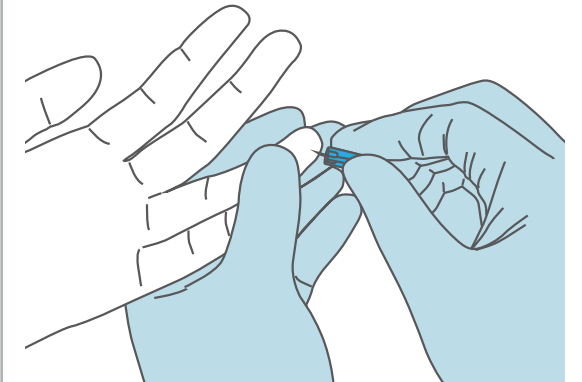


5

Using the lancet, prick the patient's finger to get a drop of blood.

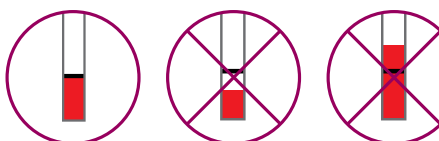
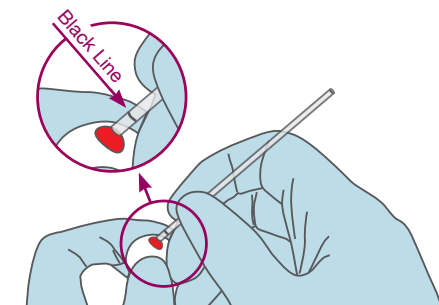


Discard the lancet into the sharps container.



6

Wait until a drop of blood has collected on the finger. Gently squeeze and hold the capillary pipette. Place pipette tip on the blood drop and release squeeze to collect blood up to fill line.



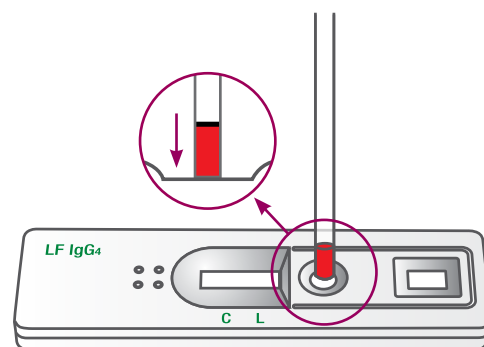
Too little Too much

7

Place the capillary pipette into the round sample well. Squeeze again to release the blood and let blood absorb into the sample well.



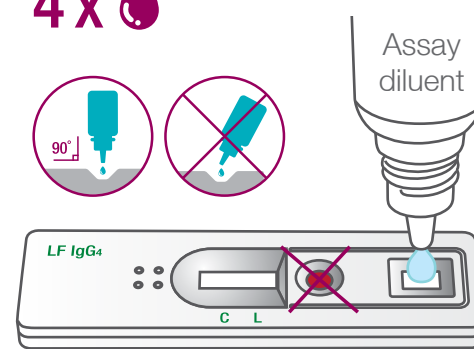
Discard the pipette in the sharps container after adding blood.



8

Add **four drops** of assay diluent into the square assay diluent well.

4 x



9



Interpret test results within **30 minutes** after adding assay diluent.

From 30 minutes to 24 hours, the results are valid.

+ Positive (Reactive)

Lymphatic Filariasis Reactive:



- Negative (Nonreactive)



x Invalid

