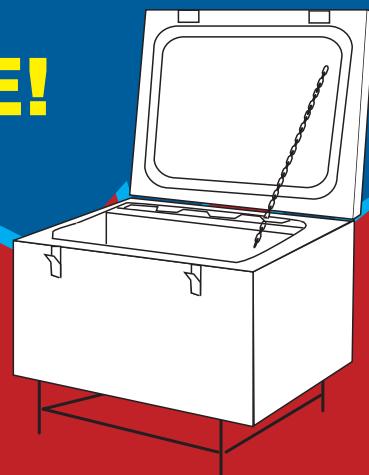
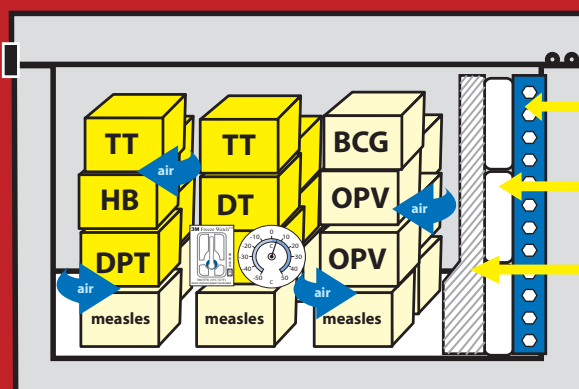


STOP FREEZING VACCINE!

Chest Refrigerator



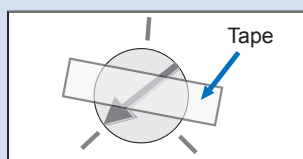
- ▶ Always load freeze-sensitive vaccines away from the evaporator.
- ▶ Do not place freeze-sensitive vaccines on the bottom of the refrigerator.
- ▶ Leave space between the vaccine boxes to allow air to circulate.
- ▶ Place a thermometer and a Freeze Watch™ indicator among the freeze-sensitive vaccines.



Evaporator
Ice Packs
Divider
Do Not Remove

Monitor the Temperature

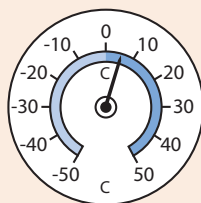
Thermostat



Set the thermostat to +2°C to 4°C in the morning when it is coolest, and tape.

Do not adjust the thermostat after power cuts or if the temperature occasionally rises above 8°C.

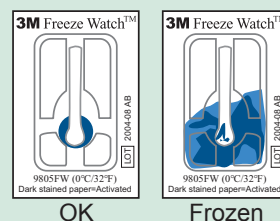
Thermometer



Place thermometer among the freeze-sensitive vaccines.

Check and record temperatures morning and evening.

Freeze Watch™



Check the Freeze Watch™ indicators morning and evening.

If the absorbing paper turns blue, test the vaccines for freezing by using the shake test.

Supported by PATH's USAID-funded HealthTech program and its Children's Vaccine Program.

Freezing damages DPT, TT, DT, and Hep B vaccines!