

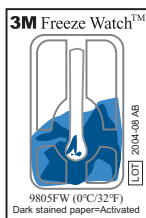
Has your vaccine been damaged by freezing?

Freezing damages the potency of DPT, DT, Hep B, and TT vaccines. It is important to identify when vaccines have been damaged by performing the steps below.

Regularly inspect your vaccine refrigerator for signs of freezing. If you suspect that vaccine has been frozen, use the shake test to determine whether the vaccine should be used (any vaccine that is frozen solid or is not homogeneous should be discarded immediately).

Inspect the Freeze Watch™ indicator and monitor the refrigerator temperature for signs that storage conditions have dropped below freezing.

Freeze Watch™ Indicator



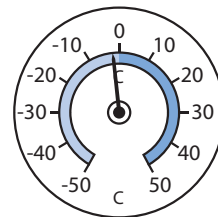
Did the indicator turn blue?

YES

Do you suspect the vaccine has been frozen?

YES

Thermometer



Has the temperature dropped below freezing?

YES

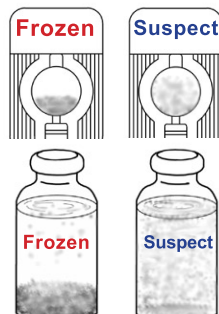
Conduct the shake test.

1. Select one sample from each type and batch of “**Suspect**” vaccine. Freeze the samples until they are solid and label them “**Frozen**.”
2. Allow “**Frozen**” samples to thaw completely.
3. Shake “**Frozen**” sample and “**Suspect**” samples **from the same batch**.
4. Observe “**Frozen**” and “**Suspect**” samples side-by-side to compare their **rates of sedimentation** (typically 5–15 minutes).

IF:

THEN:

“**Suspect**” sediments **SLOWER** than “**Frozen**”



USE

“**Suspect**” sediments at the **SAME RATE** or **FASTER** than “**Frozen**”



DO NOT USE!

The vaccine **IS DAMAGED**.

! You must perform the shake test for each separate batch of vaccine !