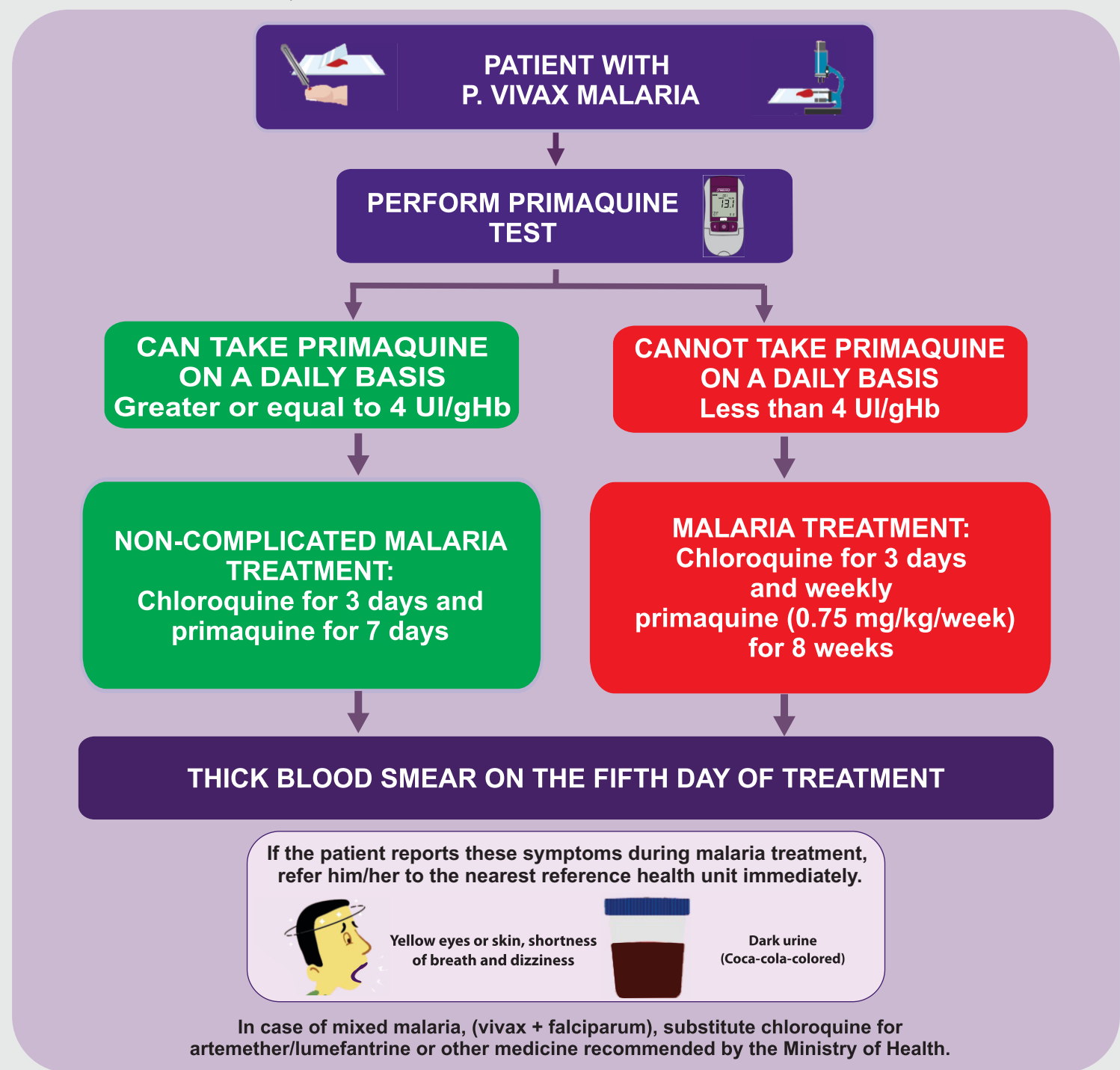


# TREATMENT AFTER THE TEST

After the test result is obtained, the treatment should be chosen as follows:



## PATIENT COUNSELLING AFTER THE TEST

### ALL CASES

1. Instruct the patient to return to for the blood smear on the 5th day, in all cases (both those who can and cannot take daily primaquine).
2. Instruct the patient to always bring the test result card when they have a new malaria episode or go to the doctor. If the patient shows the card at the time of blood sampling for malaria, the G6PD test does not need to be done again.
3. Reinforce the importance of adherence to treatment.
4. Highlight the importance of monitoring of the signs of hemolytic anemia such as dark-colored urine ('coca-cola' color), yellow eyes or skin.
5. At any time, if the patient shows signs or symptoms of severity, refer them immediately to the reference health unit.

## Tropical Medicine Foundation – Doutor Heitor Vieira Dourado

### PRIMAQUINE TEST

#### WHAT IS THE TEST?

The rapid diagnostic test for use of primaquine detects when people will present adverse reactions when taking primaquine. One common adverse reaction is severe anemia.

#### WHEN SHOULD THE TEST BE USED?

When the patient is diagnosed with Plasmodium vivax malaria or mixed malaria (vivax and falciparum). In these cases, primaquine is used to eliminate the dormant forms that are in the liver and cause relapses of malaria, even without a mosquito bite. Some people are intolerant to primaquine when it is taken for 7 days and may end up in hospital, so this test is done for screening before treatment for vivax malaria is given.

#### HOW DOES THE TEST WORK?

The primaquine test uses the blood sample from the patient with the addition of a reagent. After 2 minutes, the result is given.

#### STORAGE

- Storage must be on racks or shelves, away from the wall and floor to reduce damage by water, humidity and contaminants.
- Tests and equipment must be protected from the direct sunlight, excessive heat, rodents and insects.
- Storage must be in climatized rooms and, when there is no air conditioning or refrigeration, a natural ventilation system must be used in the environment, such as windows and vents.
- Do not store in freezers or fridges. Respect the manufacturer's recommended temperature requirements (up to 30 °C) for the storage of the strips and reagents. The tests can be performed between 15 and 40 °C.
- Store in an organized manner, and keep the tests with the shortest expiry date to be used first.

#### TRANSPORT

- Do not keep the kits inside a vehicle left in the sun.
- Transport should preferably be in air-conditioned vehicles or with the windows open.
- If possible, transport should be carried out in the morning or at night, avoiding high temperatures and exposure to the sun, as well as to rain.
- When transporting in boats, by bicycles or motorcycles, exposure to sun and rain should be avoided.
- Avoid transporting the tests together with food or other personal items.

#### WHAT TO REMEMBER WHEN USING THE TESTS:

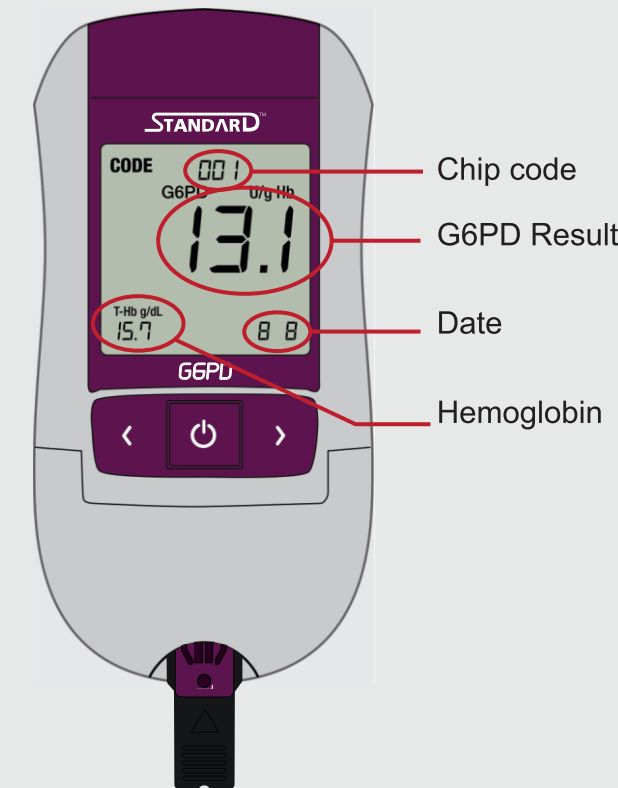
- Take the necessary care when handling blood and sharp and contaminated materials.
- Follow the instructions carefully.
- The test must be discarded if the envelope is damaged.
- Open the strip envelope only at room temperature and use it immediately after opening.



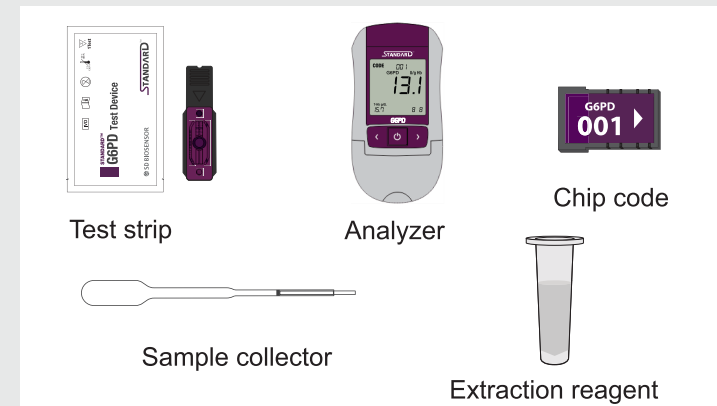
## HOW TO USE THE PRIMAQUINE TEST?

The test is easy to perform, but all the instructions must be carefully followed. The materials necessary for the test are as follows: lancet, reagent, pipette, disposable gloves, alcohol wipes, a pencil or pen and a container for disposal of sharp materials.

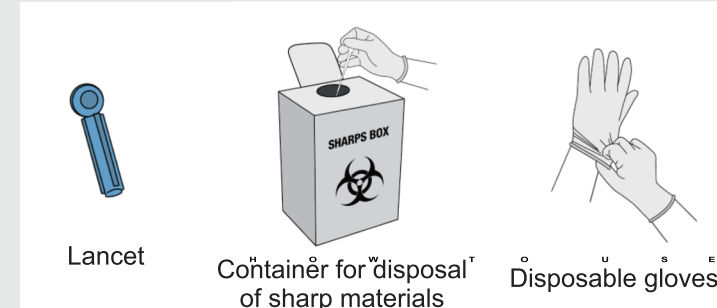
### MATERIALS NECESSARY FOR THE TEST



### MATERIAL PROVIDED IN THE KIT



### MATERIAL NOT PROVIDED IN THE KIT



### TEST PROCEDURE

1. Turn on the device, open the test strip envelope and insert the strip in the analyzer.
2. Perform the finger prick, discard the first drop of blood and use the second drop (the blood will travel up the tube automatically until it reaches the black line).
3. Mix the blood with the reagent 6-8 times with the aid of the sample collector.
4. Using a new sample collector, collect the mixture of blood and reagent immediately (up to the line).
5. Transfer the sample to the place indicated on the test strip in the analyzer.
6. Close the lid immediately and wait the countdown on the screen.

## POSSIBLE RESULTS

| Result classification                | Resultado G6PD               |
|--------------------------------------|------------------------------|
| Primaquine can be used for 7 days    | Greater or equal to 4 UI/gHb |
| Primaquine cannot be used for 7 days | Less than 4 UI/gHb           |

### DO NOT FORGET TO:

#### Check the kit information.

Make sure the code on the test strip envelope and the chip number matches. The chip must be changed each time a new box of tests is opened

#### Collect a sufficient amount of sample.

Be sure to collect sufficient amount of blood and reagent at every step. When the sample collector touches the sample, it will automatically fill by capillarity action up to the black line.

#### Use a new sample collector for each collection

Discard the sample collector tube after collecting and mixing the blood with the reagent and use a new collector tube to transfer sample with reagent to the strip in the analyzer.

#### Close the lid of the analyzer immediately.

Close the analyzer lid immediately after transferring the sample

#### Read the G6PD and hemoglobin measurements correctly.

The largest number (example in the photo: 13.1 UI/gHb) corresponds to the G6PD result. The smallest number in the lower left corner (in the photo: 15.7 Hb g/dL) indicates the patient's hemoglobin value.

